

Yale Hardware

Catalogue No.
20

The Yale & Towne Mfg. Company

General Offices :

9 Murray Street

New York

Exhibit Rooms :

251 Fifth Avenue

Branch Houses :

Chicago

90 East Lake Street

Philadelphia

818 Arch Street

Boston

12 Pearl Street

Local Offices :

Washington

326 Bond Building

San Francisco

706 Phelan Building

European Houses :

London

6 City Road, Finsbury Square

Hamburg

Alter Wandrahm, 15

Paris

7 Rue du Faubourg Montmartre

Works: Stamford, Conn., U. S. A.

Designs arranged Alphabetically

For arrangement by *Symbols* see page 14.

Design	School	Page	Design	School	Page
Abbottsford	Romanesque	724	Compiegne	Louis XVI	645
Adams	Colonial	499	Concord	Colonial	515
Adria	Italian Renaissance	691	Corinth	Greek	598
Alcazar	Spanish "	716			
Alencon	French Gothic	579	Dartmouth	Colonial	516
Alameda	Mission	659	Dedham	"	517
Amboise	French Renaissance	675	Deerfield	"	515
Amherst	Colonial	502	Delos	Greek	600
Angouleme	French Renaissance	677	Dodona	"	601
Ancona	Italian "	360	Dorian, bronze	806
Arcadian, bronze	802	" steel	830
" steel	828	Dorchester	Colonial	518
Argos	Greek	595	Dormans	French Renaissance	679
Arno	Italian Renaissance	360	Dortrecht	Flemish "	669
Arlington	Colonial	501	Dresden	German "	687
Ashby	Elizabethan	558	Dreux	French "	680
Athens	Greek	597	Drouet	Louis XVI	646
Aumont	Romanesque	721	Dubarry	" "	647
Austerlitz	Empire	566			
Auvergne	Romanesque	722	Easton	Colonial	520
			Egmont	"	371, 407
Beaumont	Romanesque	725, 738	Elne	Romanesque	730
Beauvais	French Gothic	581	Endicott	Colonial	519
Beauvoir	Romanesque	724	Epernay	French Gothic	582
Belfort	"	726	Ephesus	Greek	602
Beverly	Colonial	504	Estampes	Empire	318
Bergamo	Italian Renaissance	693	Everett	Colonial	521
Biarritz	French "	677	Evereux	Louis XIV	625
Bolton	Adam	497			
Bonn	German Renaissance	685	Fairfax	Colonial	522
Bordeaux	Romanesque	727	Ferrara	Italian Renaissance	696
Bothnian	804	Fez	Moorish	662
Brabant	Flemish Renaissance	667	Firenze	Italian Renaissance	695
Braintree	Colonial	366	Fleury	Louis XV	635
Breton	Louis XV	633	Florensac	German Gothic	587
Bristol	Colonial	505	Florian	831
Brunswick	"	508	Folkstone	Adam	498
Burlington	"	504	Fontaine	Louis XVI	648
			Fontenoy	Louis XV	637
Cambria	Modern Renaissance	713			
Certosa	Italian "	694	Gardo	Greek	604
Ceva	" "	694	Genoa	Italian Renaissance	697
Chambord	Francis I	573	Germantown	Colonial	387
Chatillon	Louis XVI	643	Gramont	Empire	568
Chester	Colonial	509	Grenoble	French Renaissance	681
Cluny	Romanesque	728	Groton	Colonial	524
Coburg	German Gothic	586	Guernsey	Elizabethan	560
Cologne	" "	584	Gueret	Romanesque	730
Colonna	Colonial	512			

Design	School	Page	Design	School	Page
Hadley	Colonial	407	Marathon, bronze	Greek	609
Harrow	Elizabethan	561	“ iron	“	846
Hatton	Tudor Gothic	594	Marengo	Empire	570
Haverford	Colonial	525	Marly	Louis XV	638
Heidelberg	German Renaissance	690	Meaux	Louis XVI	652
Hellenian		808	Medford	Colonial	535
Hendon	English Gothic	576	Medici	Italian Renaissance	700
Hertford	Elizabethan	562	Menin	Louis XIV	627
Hingham	Colonial	526	Meridian		814
Hondo	German Renaissance	688	Milan	Italian Renaissance	702
			Miletus	Greek	612
Illiers	Empire	568	Monaco		848
Imola	Italian Gothic	592	Monceaux	Louis XVI	654
Inwood	Colonial	529	Murano	Italian Gothic	593
Ionian, bronze		810	Mystic	Colonial	363, 454
“ steel		834			
Isigny	Louis XVI	650	Nantes	Louis XIV	628
Ivry	French Gothic	583	Nantucket	Colonial	536
			Navarro	Louis XV	639
Jackson	Mission	275	Nemours	Empire	571
Jamestown	Colonial	530	Newcastle	Georgian	575
Jarnac	Romanesque	731	Newport	Colonial	364, 454
Jena	Empire	569	Nimes	Romanesque	732
Jennico		844	Nubian, bronze		816
Jessen	German Gothic	587	“ steel		838
Jeumont	Louis XIV	626			
Jourdan	Louis XVI	649	Ofanto	Italian Renaissance	704
			Oldenburg	German Gothic	590
Kampen	Flemish Renaissance	672	Olympian		818
Kastania	Greek	608	Oporto	French Renaissance	682
Kelp	German Gothic	588	Ortomaro	Italian	370
Kempton	Colonial	532	Orville	French	684
Kendall		363, 371, 386	Osaka	Japanese	619
Keswick	Mission	263	Ostuni	Italian Renaissance	704
Khartoum	Egyptian	557			
Kingston	Colonial	531	Palermo	Italian Renaissance	705
			Parma	Modern	714
Lagrasse	Romanesque	731	Pasco		850
Lancaster	Colonial	320	Pavian		820
Largo	Flemish Renaissance	670	Pembroke	English Gothic	577
Larissa	Greek	606	Petersham	Colonial	536
Laval	L'Art Nouveau	621	Piedmont	“	537
Lexington	Colonial	532	Plain, BP		800
Libourne	Byzantine	360	“ BR		796
Lodi	Italian Renaissance	699	“ BT		790
Lorient	Louis XVI	321, 430	“ DP		788
Lorraine	“	650	“ DR		778
Louvre	“	309, 322	“ DT		768
Lozere	“	652	“ GN		764
Lydian, bronze		812	“ GR		754
“ steel		836	“ GT		744
Lynn	Colonial	533	Plymouth	Colonial	540
			Pueblo	Mission	362, 371, 386
Malaga	Spanish Renaissance	717	Putney	Colonial	323, 390
Manchester	English	665			
Mandalay	Indian	617			

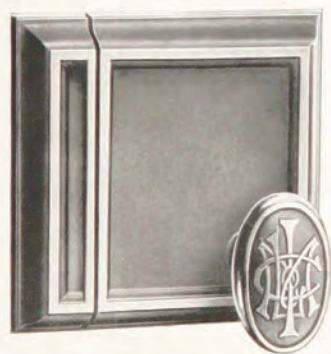
Design	School	Page	Design	School	Page
Quiberon	Louis XVI	654	Turin	Italian Renaissance	710
Quinton	Colonial	371, 407	Tyrian, bronze	826
Raleigh	Elizabethan	563	" steel	842
Realmont	Romanesque	733	Urbino	Italian Renaissance	710
Rhodes	Greek	613	Uzzano	" "	370
Rialto	Italian Renaissance	706	Valence	Romanesque	737
Roanoke	Colonial	542	Valencia	Louis XIV	632
Rohan	Louis XVI	655	Vanceboro	Colonial	262
Rokeby	Romanesque	734	Velden	Flemish Renaissance	673
Rubian	822	Vence	Romanesque	737
Saarbruck	German Gothic	590	Vendome	Louis XIV	629
St. Cloud	Empire	571	Vergennes	Henry II	615
St. Malo	Louis XVI	658	Vernoux	Louis XVI	658
Salem	Colonial	544	Versailles	Louis XIV	630
Sconset	"	371, 406	Vigo	L'Art Nouveau	622
Senlis	Modern Renaissance	715	Vigone	Roman	720
Sevres	French "	684	Vilaine	Louis XV	642
Siena	Italian "	707	Villeroi	" "	642
Sparta	Colonial	546	Vinay	Louis XIV	631
Staunton	"	371, 407	Volo	Greek	614
Stonington	"	548	Ware	Colonial	551
Stratford	Elizabethan	564	Warwick	"	274
Syrian, bronze	824	Wentworth	Elizabethan	565
" steel	840	Weymouth	Colonial	552
Targon	Romanesque	736	Wilton	"	553
Taunton	Colonial	362, 371, 386	Winthrop	"	367
Tiber	Roman	719	Woburn	"	554
Torcello	Byzantine	360	Yantic	Colonial	555
Tosca	Italian Renaissance	708	Yarmouth	English Gothic	578
Touraine	Romanesque	735	Yatton	Colonial	371, 406
Tours	French Gothic	583	York	English Gothic	578
Traves	Colonial	550	Yorktown	Colonial	556
Treviso	Italian Renaissance	709	Yuma	Mission	661
Trianon	Louis XVI	656	Xenia	Flemish Renaissance	674
Tunis	Moorish	663			



Lock No. 6000. Set No. JV7000 (page 262)
Regularly furnished without monogram



Lock No. 6020. Set No. JV7020 (page 262)
Regularly furnished without monogram



Lock No. 6010. Set No. JV7010 (page 262)
Regularly furnished without monogram

No. 6000 series

For corridor doors

Master-keyed as explained on page 252

Case and strike as below

Case: $7\frac{1}{2} \times 4\frac{1}{2} \times 1\frac{1}{2}$ inches; strike $7\frac{1}{2} \times 1\frac{3}{8} \times 1\frac{1}{2}$ inches.

Connecting spider: $7\frac{3}{8} \times 2\frac{3}{8}$ inches; copper plated iron.

Backset $2\frac{3}{4}$ inches. Bronze cylinders, bolt and $\frac{3}{8}$ inch swivel hub. Keys: 3 paracentric, nickel-bronze, coined, gold plated bows, from No. 8 blank. Five pin-tumblers. Changes practically unlimited. Master-keys as ordered.

For doors: 1 inch thick and upwards. Thickness and hand must always be specified.

Operation: By knob from both sides; by change-key or master-key from outside only. Outer knob may be set by stop. Bolt may be deadlocked by thumb-turn from inside, when it is inoperative from outside.

Regular trim: Pair of knobs and one escutcheon plate.

No.

6000 Cast bronze case and strike.

6200 Cast iron case and strike.

Each in a paper box with screws and trim as ordered.

No. 6020 series

For communicating doors

Case and strike as below

Case: $5\frac{1}{4} \times 4 \times 1\frac{3}{8}$ inches; strike $5\frac{1}{4} \times 1\frac{1}{4} \times 1\frac{3}{8}$ inches.

Connecting spider: $5\frac{3}{4} \times 2\frac{5}{8}$ inches; copper plated iron.

Backset $2\frac{3}{4}$ inches. Bronze bolt, thumb-turns and $\frac{5}{16}$ inch hubs.

For doors: 1 inch thick and upwards. Thickness and hand must always be specified.

Operation: By knob from both sides. Knobs and bolt may be deadlocked by thumb-turn from both sides, making it possible to deadlock independently from either side.

Regular trim: Pair of knobs and one escutcheon plate with thumb-turn.

No.

6020 Cast bronze case and strike.

6220 Cast iron case and strike.

Each in a paper box with screws and trim as ordered.

No. 6010 series

For closet doors

Master-keyed as explained on page 252

Case and strike as below

Case: $5\frac{1}{4} \times 4 \times 1\frac{3}{8}$ inches; strike $5\frac{1}{4} \times 1\frac{1}{4} \times 1\frac{3}{8}$ inches.

Connecting spider: $5\frac{3}{4} \times 2\frac{5}{8}$ inches; copper plated iron.

Backset $2\frac{3}{4}$ inches. Bronze cylinder, bolt and $\frac{5}{16}$ inch hub.

Keys: 3 paracentric, nickel-bronze, coined, gold plated bows, from No. 8 blank. Changes practically unlimited. Master-keys as ordered.

For doors: 1 inch thick and upwards. Thickness and hand must always be specified.

Operation: By knob from both sides; by key from outside only, which deadlocks knob and bolt.

Regular trim: Pair of knobs and one escutcheon plate.

No.

6010 Cast bronze case and strike.

6210 Cast iron case and strike.

Each in a paper box with screws and trim as ordered.

When ordering give list number or lock-set number and finish.

For finishes see page 91.



Fig. 1

Louis XV school

Tip for 750 Butts of the following sizes:

2 x 2 ins. 5 x 5 ins.
3 x 3 " 5 x 6 "
4 x 4 " 5 x 7 "



Fig. 2

Italian Renaissance

Tip for 750 Butts of the following sizes:

3 x 3 ins. 5 x 5 ins.
3½ x 3½ " 5 x 6 "
4½ x 4½ " 8 x 8 "



Fig. 3

Italian Renaissance

Tip for 750 Butts of the following sizes:

4 x 4 ins. 5 x 5 ins.



Fig. 4

Colonial school

Tip for 750 Butts of the following sizes:

3 x 3 ins. 5 x 5 ins.



Fig. 5

Romanesque school

Tip for 750 Butts of the following sizes:

3 x 3 ins. 4½ x 4½ ins.
3½ x 3½ " 5½ x 5½ "
4 x 4 " 6 x 6 "



Fig. 6

Greek school

Tip for 750 Butts of the following sizes:

4 x 4 ins. 6 x 6 ins.
5 x 5 " 8 x 8 "



Fig. 7

Louis XV school

Tip for 780 Butts of the following sizes:

4 x 4 ins. 5 x 5 ins.



Fig. 8

Louis XVI school

Tip for 750 Butts of the following sizes:

5 x 5 ins. 7 x 7 ins.



Fig. 9

Louis XIV school

Tip for 750 Butts of the following size:

4 x 4 ins.



Fig. 10

Romanesque school

Tip for Butts of the following numbers and sizes:

No. 750	No. 780
3½ x 3½ ins.	4 x 4 ins.
4½ x 4½ "	5 x 5 "
5½ x 5½ "	



Fig. 11

Colonial school

Tip for 750 Butts of the following sizes:

3 x 3 ins. 6 x 8 ins.
6 x 6 "



Fig. 12

Colonial school

Tip for 750 Butts of the following sizes:

5 x 5 ins. 6 x 8 ins.
6½ x 6½ "



Fig. 13

Greek school

Tip for 750 Butts of the following sizes:

4 x 4 ins. 5 x 5 ins.



Fig. 14

Colonial school

Tip for 750 Butts of the following sizes:

4 x 4 ins. 4½ x 4½ ins.
5 x 5 " 5½ x 5½ "

Elizabethan School

FROM 1558 to 1603 the Elizabethan period of England produced not only great soldiers, sailors, writers and the immortal Shakespeare, but also a school of design based upon Flemish and Classic art of which the strong and virile characteristics are appreciated to-day. Strap work enriched by bosses and curling cartouches with drapery festoons, the Tudor flat pointed arch, the guilloche and the frequent interlace, mark most emphatically this style.

A certain ungainliness and crude lack of scale is sometimes apparent, due undoubtedly to the untrained but vigorous designers who were generally the very men who did the carving and joiner work.

Ashby Design

Symbol SA

Cast bronze and brass

Appropriate finishes

AZ10 . . .	Buffed brass	CX22 . . .	Old copper
AY22 . . .	Old brass	SY52 . . .	Oxidized silver
BZ10 . . .	Buffed bronze	GY10 . . .	Gold

For description of finishes see page 91.

Knobs and roses

No.	Size	Description
SA97	2 $\frac{3}{8}$ x 2 $\frac{3}{8}$ inches	Door knob with No. 0 (high) shank
SA234	2 $\frac{3}{8}$ x 2 $\frac{3}{8}$ "	Rose with No. 0 (high) thimble

Escutcheons

SAS9	10 $\frac{5}{8}$ x 2 $\frac{1}{2}$ inches	Plate for all inside door locks
SA92	14 $\frac{7}{8}$ x 2 $\frac{3}{4}$ "	" " " front door locks

When ordering give list number (in the case of escutcheons also lock number), size and finish. For finishes see page 91.



Nos. SA9 and SA897



No. SA854



No. SA1349



Cuts third size

Chambord Design

Escutcheons—continued

No.	Size	Description
LC802	1 x 2½ inches	Key plate for bit key cabinet locks
LC803	2½ x 1 "	" " " " " " "
LC804	1 x 2½ "	" " " flat key " "
LC805	2½ x 1 "	" " " " " " "
LC812	2½ x 1 "	" " " all door locks
LC854	9¾ x 2¾ "	Cup for all sliding door locks

List number of lock to be associated with escutcheons must always be specified.
For escutcheons with thumb-turns add ½ to list number.

Other pieces

LC1099	1½ x 6½ inches	Drawer pull, drop
LC1952	6½ x 6½ x 1¾ ins.	Hinge plate, top and bottom
LC1416	7 x 2¾ inches	Push button
LC1730	12¼ x 3¼ "	Push plate
LC1349	1½ x 6¼ "	Sash lift, flush
LC11349	" "	" " " locking
XTA54	1½ "	Thumb-turn, 5/16 in. spindle (page 473)
XTA35	1¾ "	" 3/16 " " " "
XTA55	" "	" 5/16 " " " "

Locks in sets

LC1798	Inside doors	Lock 1620 (page 199), knobs LC67, 2 escutcheons LC89
LC2198	" "	Lock 1500 (page 202), knobs LC67, 2 escutcheons LC89
LC2898	" "	Lock 1402 (page 207), knobs LC67, 1 escutcheon each LC89 and LC89½
LC3298	Communicating	Lock 1535 (page 192), knobs LC67, 1 escutcheon each LC89 and LC89½
LC3698	" "	Lock 1525 (page 193), knobs LC67, 2 escutcheons LC89½
LC139	Sliding doors	Lock 1706 (page 215), 2 cup escutcheons LC854
LC149	" "	Lock 1716 (page 215), 4 cup escutcheons LC854
LC159	" "	Lock 1726 (page 215), 4 cup escutcheons LC854
LC8399	Vestibule doors	Lock 790 (page 222), knobs LC68, 2 escutcheons LC90
LC8299	Front doors	Lock 750 (page 222), knobs LC68, 1 escutcheon each LC90 and LC90½

When ordering give list number (in the case of escutcheons also lock number) and finish. For finishes see page 91.



Nos. LC90 and LC68



No. LC1416



No. LC1730



No. LC804



No. LC812



No. LC1349

