

CATALOGUE No. 145

OF

BUILDERS' HARDWARE



HAMMACHER, SCHLEMMER & CO.

209 BOWERY, NEW YORK, SINCE 1848

CABINET, REFRIGERATOR AND PIANO HARDWARE, FACTORY SUPPLIES, TOOLS FOR ALL TRADES

INDEX

A

	PAGE
Adjusters, Blind	226
" Casement	164
" Stop Bead	161
Angle Plates	248
Annunciator Wire	270
Anti-friction Spring Hinges	138
Automatic Drops	263
Awning Hooks	247

B

Back Flaps	144
Balances, Sash	231
Ball Tipped Butts.....	140-142
Bar Sash Lifts.....	151-152
Barn Door Hangers	236-238
" " Rail	243
" Sliding Door Locks.....	84
Barrel Bolts	197
Bars, Shutter	160-161
Bardsley Door Checks.....	128
Batteries	268-269
Bells, Electric	260-262
Blind Adjusters	226
" Fasteners	221-222, 226
" Hinges	223-226
" Staples	256
Blount Door Checks	127
Bolts, Barrel	197
" Chain	207
" Door	199
" Flush	201-202
" Foot	204
" Mortise Door	200-201
" Sash	160
" Spring	198
" Square	199
" Surface	203
" Toilet Indicator	124
Bommer Floor Hinges	135
" Spring Hinges	132-134

* See also Fancy Design Hardware.

B—Continued

	PAGE
Boxes, Mail	122
Braces, Corner	248
" Hand Rail	212
Brackets, Hand Rail	213
" Shelf	213-216
Buttons, Door	170
" " on Plate	171
* " Push	116-119
Butts, Ball Tipped	140-142
" Fast Joint	140
" Iron	142
" Loose Pin	140-142
" Spring, Chicago	136-137
" Wrought Steel	143
Buzzers	263

C

Cabin Door Hooks	195
Casement Adjusters	164
" Fasteners	162-163
Catches, Cupboard	173-175
" Drop	172
" Elbow	172
" Screen Door	181-182
" Transom	179-180
Ceiling Hooks	191-192
Centers, Sash	165-167
Chain Bolts	207
" Door Fasteners	204-206
Chain, Sash	230
Chains, Transom	170
Checks and Springs, Door	126-129
Chicago Spring Butts	136-137
Clamps, Rope	245
Closet Strikers	209
Clothes Line Hooks	247
Coat and Hat Hooks	186-190
Corbin Door Checks	126
Cord, Sash	230
Corner Braces	248
" Irons	249

C—Continued

	PAGE
Corrugated Fasteners	251
Cotton Rope	245
Crank Handles	101-102
Cupboard Catches	173-175
" Turns	176-179
Cut Nails	254

D

Deadening Felt	257
Door Bolts	199
" Buttons	170
" " on Plate	171
" Checks and Springs	126-129
" Fasteners, Chain	204-206
" Holders	208-209
" Knobs	96-98
" Knockers	120
" Openers, Electric	264-265
* " Pulls	109-113
" Springs	125
" " Electric	266
" Stops	209-211
Drawer Pulls	182-185
Drop Catches	172
Drops and Pins	228
" Automatic	263
Dumbwaiter Fixtures	244
" Rope Clamps	245
" Weights	245

E

Eclipse Door Checks	129
Elbow Catches	172
Elbows, Speaking Tube	271
Electric Bell Outfits	260
" Bells	260-262
" Door Openers	264-265
" Tape	270
Electricians' Staples	270
Elevator Sliding Door Latches	83
Escutcheons	103-106, 292
" Flush Cup	107-108

F

Faces, Ventilator	216
Fancy Design Hardware	274-283

* See also Fancy Design Hardware.

F—Continued

	PAGE
Fancy Flaps	145-146
Fast Joint Butts	140
Fasteners, Blind	221-222, 226
" Casement	162-163
" Chain Door	204-206
" Corrugated	251
" Sash	155-159
Fasts, Hold	247
Felt, Deadening	257
Fixtures, Dumbwaiter	244
" Storm Sash	227
Flaps, Back	144
" Fancy	145-146
" Shutter	144
" Water Closet	147-148
Floor Hinges, Bommer	135
Flush Bolts	201-202
" Cup Escutcheons	107-108
" Sash Lifts	150-151
Foot Bolts	204
*Front Door Lock Sets	2-18

G

Gate Hinges	219
" Hooks and Eyes	194
" Latches	217-218
" Locks	77-78
Glass Knobs	287-291
Glaziers' Points	250
Glue	256
" Liquid	256

H

Hand Rail Braces	212
" " Brackets	213
" " Screws	212
Handles and Escutcheons, Lever	102
" " Latches, Store Door	92
* " " Locks, Store Door	85-91
" Crank	101-102
Hangers, Barn Door	236-238
" Parlor Door	239-241
Hardware, Fancy Design	274-283
Harness Hooks	193-194
Hasps and Staples	246
" Hinge	195-196
Hat and Coat Hooks	186-190
Hinge Hasps	195-196

H—Continued

	PAGE
Hinges, Blind	223-226
“ Floor, Bommer	135
“ Gate	219
“ Hook	221
“ Rolled Plate	221
“ Spring, Anti-Friction	138
“ Spring, Bommer	132-134
“ “ Screen Door	139
“ “ Show Case	138-139
“ Strap	220
“ T	220
“ Wash Tray	148
Holders, Door	208-209
Holdfasts	247
Hook Hinges	221
“ Sash Lifts	153-154
Hooks and Eyes	194
“ “ Staples	246
“ Awning	247
“ Cabin Door	195
“ Ceiling	191-192
“ Clothes Line	247
“ Coat and Hat	186-190
“ Harness	193-194
“ Sash Pull	168
“ Speaking Tube	271
“ Wardrobe	191

I

Indicator Bolts, Toilet	124
Iron Butts	142
Irons, Corner	249
“ Straight	249

K

Knob Spindles	99
Knobs, Door	96-98
“ Glass	287-291
“ Mortise Bolt	99
“ Shutter	149
Knockers, Door	120

L

Latch and Lock, Rim Night.....	62
Latches and Handles, Store Door.....	92
“ Gate	217-218
“ Mortise	64-68

* See also Fancy Design Hardware.

L—Continued

	PAGE
Latches, Rim	75
“ “ Night	69-74
“ Screen Door	93
“ Secret	76
“ Thumb	94
Letter Box Plates	121
Lever Handles and Escutcheons.....	102
Lift and Lock, Sash.....	154-155
Lifters, Transom	169
Lifts, Sash, Bar	151-152
“ “ Flush	150-151
“ “ Hook	153-154
Liquid Glue	256
* Lock Sets	2-35
* Locks and Handles, Store Door.....	85-91
“ Gate	77-78
“ Mortise	45-52
“ Rim, Horizontal	59-61
“ “ Upright	53-58
“ Sliding Door	79-84
“ Wardrobe	63
Loose Pin Butts	140-142

M

Mail Boxes	122
Manila Rope	245
Mortise Bolt Knobs	99
“ Door Bolts	200-201
“ Latches	64-68
“ Lock Sets	20-29
“ Locks	45-52
Mouthpieces	272

N

Nails, Cut	254
“ Wire	254-255
Name Plates	123
Numbered Thumb Tacks	123
Numbers	124

O

Openers, Door, Electric.....	264-265
Outfits, Electric Bell.....	260

P

Padlocks	95
Panel Points	250
Paper, Roofing	257

P—Continued

	PAGE
Paper, Sheathing	257
Parlor Door Hangers	239-241
Pieces, Thumb	100
Pins, Sash	256
Plate Hinges	221
Plates, Angle	248
" Letter Box	121
" Name	123
* " Push and Pull	114-115
" Sash Pull	167
" T	249
Points, Glaziers'	250
" Panel	250
* Pull Plates	114-115
Pulleys, Sash	232-234
* Pulls, Door	109-110
" Drawer	182-185
" Storm Door	111-113
* Push Buttons	116-119
* " Plates	114-115

R

Rail, Barn Door	243
" Sliding Door	242-243
Rim Latches	75
" Lock Sets	30-35
" Locks, Horizontal	59-61
" " Upright	53-58
" Night Latch and Lock	62
" " Latches	69-74
Rolled Plate Hinges	221
Roofing Paper	257
" Tins	257
Rope Clamps, Dumbwaiter	245
Rope, Cotton	245
" Manila	245

S

Sal Ammoniac	269
Sand Paper	257
Sash Balances	231
" Bolts	160
" Centers	165-167
" Chain	230
" Cord	230
" Fasteners	155-159
" Lift and Lock	154-155

* See also Fancy Design Hardware.

S—Continued

	PAGE
Sash Lifts, Bar	151-152
" " Flush	150-151
" " Hook	153-154
" Pins	256
" Pull Hooks	168
" " Plates	167
" Pulleys	232-234
" Weights	229
Screen Door Catches	181-182
" " Latches	93
" " Spring Hinges	139
Screws, Hand Rail	212
" Wood, Brass	253
" " Iron	252
Secret Latches	76
* Sets, Lock	2-35
Sheathing Paper	257
Sheaves, Sliding Door	234-236
Shelf Brackets	213-216
Show Case Spring Hinges	138-139
Shutter Bars	160-161
" Flaps	144
" Hooks and Eyes	194
" Knobs	149
Signs or Name Plates	123
Sliding Door Locks	79-84
" " Rail	242-243
" " Sheaves	234-236
Speaking Tube	271
Spindles, Knob	99
Spring Bolts	198
" Butts, Chicago	136-137
" Hinges, Anti-Friction	138
" " Bommer	132-134
" " Screen Door	139
" " Show Case	138-139
Springs and Checks, Door	126-129
" Door	125
" " Electric	266
" Window	162
" " Electric	266
Square Bolts	199
Staples	246
" and Hasps	246
" " Hooks	246
" Blind	256
" Electricians'	270
Stop Bead Adjusters	161
Stops, Door	209-211

S—Continued

	PAGE
Store Door Latches and Handles	92
* “ “ Locks and Handles	85-91
* Storm Door Pulls	111-113
“ Sash Fixtures	227
Straight Irons	249
Strap Hinges	220
Straps, Speaking Tube	271
Strikers, Closet	209
Strip, Weather	258-259
Surface Bolts	203
Switches	267

T

Tacks, Thumb, Numbered	123
Tape, Electric	270
Thumb Latches	94
“ Pieces	100
“ Tacks, Numbered	123
T Hinges	220
Tins, Roofing	257
Toilet Indicator Bolts	124
T Plates	249
Transom Catches	179-180
“ Chains	170
“ Lifters	169
Tube, Speaking	271

* See also Fancy Design Hardware.

T—Continued

	PAGE
Turnbuckles	228
Turns, Cupboard	176-179

V

Ventilator Faces	216
Ventilators	216
* Vestibule Door Lock Sets	3-19

W

Wardrobe Hooks	191
“ Locks	63
Wash Tray Hinges	148
Water Closet Flaps	147-148
Weather Strip	258-259
Weights, Dumbwaiter	245
“ Sash	229
Window Springs	162
“ “ Electric	266
Wire Nails	254-255
Wire, Annunciator	270
Wood Screws, Brass	253
“ “ Iron	252
Wrought Steel Butts	143

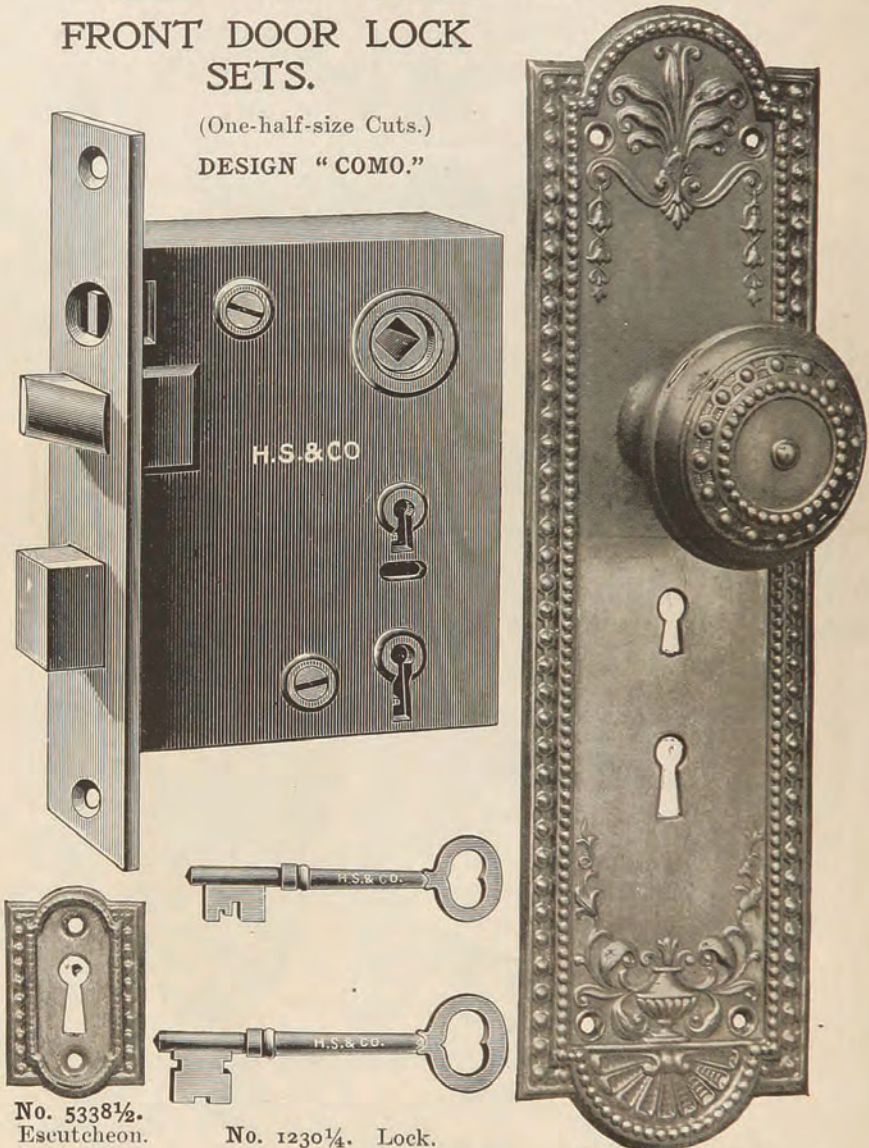
Z

Zincs for Batteries	269
---------------------------	-----

FRONT DOOR LOCK SETS.

(One-half-size Cuts.)

DESIGN "COMO."



No. 5338 $\frac{1}{2}$.
Escutcheon.

No. 1230 $\frac{1}{4}$. Lock.

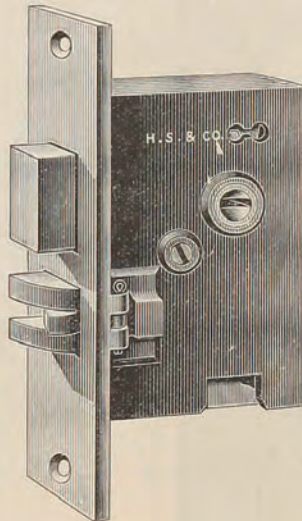
Set No. F300.

No. 5331. Knob.
No. 5332. Escutcheon.

For description see page 38.

STORE DOOR LOCKS AND HANDLES.

(One-third-size Cuts.)



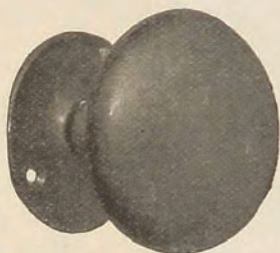
No. R₃₁₂₆ $\frac{1}{2}$ x R₃₈₆ $\frac{1}{4}$. Handle No. R₃₁₂₆ $\frac{1}{2}$; 1 $\frac{1}{4}$ x 2 $\frac{3}{4}$ in. Iron, Antique Copper Finish. Lock No. R₃₈₆ $\frac{1}{4}$; 4 $\frac{1}{2}$ x 3 in. Iron, Antique Copper Finish, Bronze Reversible Anti-Friction Latch and Bolt; 3 Tumblers, with 2 Nickel-plated Steel Keys.

No. N₃₁₂₆ $\frac{1}{2}$ x N₃₈₆ $\frac{1}{4}$. Same as above, but Bronze Plated.

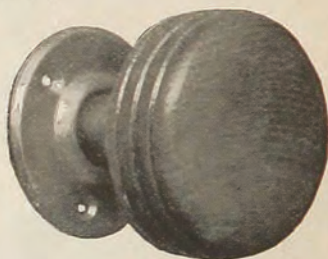
See Price List.

DOOR KNOBS.

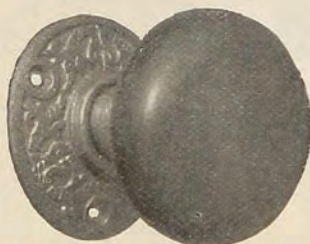
(One-half-size Cuts.)



Nos. 500 and 505.
Style of Nos. 310 to 555.



No. 231.
Without Mountings, No. 230.



Nos. N3700 and N3700½.



No. N03523.

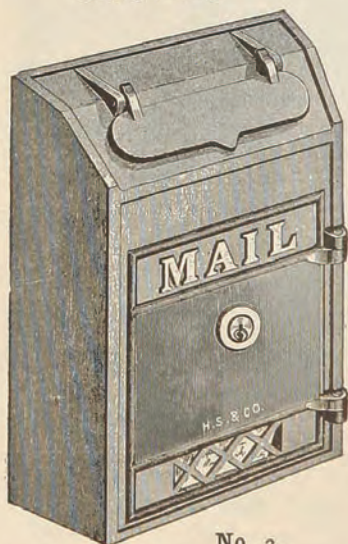
- | | | | |
|-------------|--------|----------|---|
| No. 230. | 2¼ in. | Mortise. | Ash, Oak, or Cherry, without Mountings. |
| No. 231. | 2¼ in. | Mortise. | Ash, Oak, or Cherry, Bronze Mountings. |
| No. 310. | 1¾ in. | Mortise. | Porcelain, Japanned Mountings. |
| No. 500. | 2¼ in. | Mortise. | Mineral, Japanned Mountings. |
| No. 505. | 2¼ in. | Rim. | Mineral, Japanned Mountings. |
| No. 510. | 2¼ in. | Mortise. | Porcelain, Japanned Mountings. |
| No. 512. | 2¼ in. | Mortise. | Ebony, Coppered Mountings. |
| No. 515. | 2¼ in. | Rim. | Porcelain, Japanned Mountings. |
| No. 517. | 2¼ in. | Rim. | Ebony, Coppered Mountings. |
| No. 550. | 2¼ in. | Mortise. | Porcelain, Porcelain Mountings. |
| No. 555. | 2¼ in. | Rim. | Porcelain, Porcelain Mountings. |
| No. N03523. | 2¼ in. | Mortise. | Bronze Plated. |
| No. N3700. | 2¼ in. | Mortise. | Jet, Bronze-plated Mountings. |
| No. N3700½. | 2¼ in. | Rim. | Jet, Bronze-plated Mountings. |

See Price List.

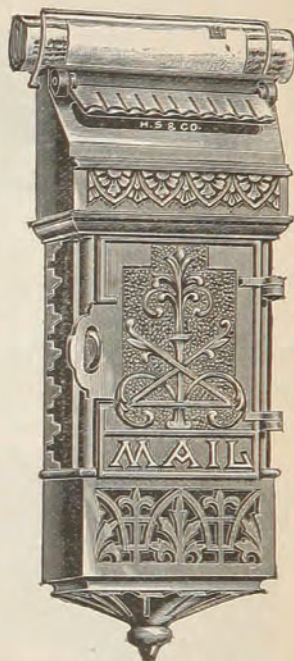
MAIL BOXES.



Nos. 3 and 4.



No. 2.



No. 5.

No. 2. 11 x 7 x 3 in. Cast Iron, Japanned, with Lock and 2 Corrugated Keys.

No. 3. 10½ x 5½ x 2¾ in. Wrought Steel, Dull Black Japanned, with Secure Lever Lock and 2 Keys.

No. 4. Style of No. 3, but Antique Copper Finish.

No. 5. 12 x 4½ x 2½ in. Cast Iron, Dark Green Finish. Without Padlock.

See Price List.