

CATALOGUE
No. 19

LOCKS
AND
HARDWARE



MANUFACTURED BY
READING HARDWARE CO.
READING, PA., U. S. A.
WAREHOUSES AND SAMPLE ROOMS
NEW YORK PHILADELPHIA CHICAGO

General
Index
Numerical
Index
A-10

50

G147

P324

505

P1020

P1439

2330

5728 B

Locks
and
Latches

Escutch'ns

Designs

Schools
List of
Finishes

Finishes
for
Woods
Relative
Prices of
Finishes

Hand of
Doors
Special
Work

INDEX

A	PAGE
Adjusters, Casement	708—711
Window Stop	712
Advance Apple Parer, Corer and Slicer	806
Alarm Bells	506
Altena Lever Handles	128
Anti-Friction Front Door Mortise Locks	66, 67
Vestibule Mortise Latches	66, 67
Apartment House Letter Boxes	573
Mortise Knob Locks	51
Apple Parers	805, 806
Asylum Mortise Locks	29
Automatic Burner Buttons	502
Auxiliary Springs	129
Awning Pulleys	760
Axle Pulleys	749
Art Section	201—428
To find designs in the Art Section, see Index of Designs	

B	
Back Flaps, Wrought Steel	587
Baggage Check Hooks	742
Ball Bearing Butts	603
Barn Door Elbow Catches	660
“ Hangers	768, 769
“ Hasp and Latch	508
“ Latches	508
“ Mortise Locks	33
“ Pulls	555
“ Rail	770
“ Rim Locks	13
“ Rollers	768
“ Stays	768
Barrel Bolts	625, 626
Bar Sash Lifts	698, 699
Bars, Espagnolette	656
Shutter	714, 715
Bath-Room Mortise Knob Locks	51
Bead Stop Screws	712
Bed Fasts	774
Bell Cranks	507
Levers	503
Pulls	501
Bells, Door	503—506
Alarm	506
Electric Ring Door	506
Gong Door	506
On Carriages	507
Rotary Door	504, 505
and Turn Knobs in Sets	504, 505
Bench Screws	782
Bird Cage Hooks	747, 748
Blind Catches, Sliding	667
Door Hinges	611
Hinges, Gravity	619
“ Surface	619
Slat Tenons	712
Bobs, Plumb	784

B	PAGE
Bolts, Barrel	625, 626
Book Case	636
Bottom	635
Cast Brass Square Spring	629
Chain	631—633
Bolts, Cremorne	647—654
Cupboard	636
Double Extension Flush	645, 646
Dutch Door Flush	641
Flat Ship	637
Flush	637—646
Foot	634, 635
Mortise Door	624
“ Flush	642—646
“ Stall Door	23
Mosquito Bar	637
Ship Flush	637
Shutter	627
Square	630
“ Door	630
“ Neck	627, 629
“ Spring	627, 629
Surface	647—654
Toilet	612
“ Indicator	613
Tower	625
Window or Sash	637
“ Spring	704
Wrought Brass Square Spring	629
“ Steel Spring	628
“ “ Square	628
Bommer Spring Hinges	604—608
Book Case Bolts	636
Boston Sash Fasteners	691
Bottom Bolts	635
Boxes Letter for Apartment House	573
Twine	781
Brackets, Flower Pot	776, 777
Lamp	776
Screen Door	678
Shelf	778
Stair Rail	775
Window Screen	678
Brass Flush Bolts	638
Bronze Letters	569
Numbers	569
Butchers' Scales	793, 794
Buttons, Electric Push	201—428, 502
Door	657
Butts	587—603
Ball Bearing	603
Bronzed Iron	599, 600
Cabinet	592
Cast Brass	594, 597, 602, 603
“ Bronze	588, 590, 592, 594, 595, 597, 599, 601—603
“ Parliament	595
Fast Joint Cast	596

General
Index
Numerical
Index

A-10

50

G147

P324

505

P1020

P1439

2330

5728 B

Locks
and
Latches

Escutch'ns

Designs

Schools
List of
Finishes

Finishes
for
Woods

Relative
Prices of
Finishes

Hand of
Doors
Special
Work

B		PAGE
Butts, Inside Blind	587, 588	588
Light Narrow	590, 591	591
Loose Joint Cast	596, 597	597
" Pin "	599—601	601
" " Wrought	602	602
Mayer's	595	595
Parliament Shutter	595	595
Wrought Bronze	588, 590—593, 602	602
" Steel	587, 589, 591, 593, 598	598

C		PAGE
Cabin Door Hooks	745	745
Cabinet Butts	592	592
Clamps	782	782
Escutcheons	116, 201—428	428
Hinge Plates	201—428, 582	582
Car Sash Locks	690	690
Card Frames or Label Plates	724	724
Cased Shutter Bolts	627	627
Casement Adjusters	708—711	711
Fasteners	705—707	707
Cast Brass Square Spring Bolts	629	629
Bronze Butts	590, 594, 597, 602, 603	603
Fast Joint Butts	596	596
Loose " "	596, 597	597
" Pin "	599—601	601
Staples for Square Bolts	628	628
Casters, Store Truck	772, 773	773
Catches, Bookcase	636	636
Cupboard	661—663	663
Elbow	660	660
French Window	667	667
Inside Shutter	713	713
Lever Cupboard	663	663
Refrigerator	659	659
Screen Door	671—674	674
Show Case	659	659
Sliding Blind	667	667
Transom	668—670	670
Ceiling Hooks	728	728
Pulleys	757	757
Cellar Window Fasteners	690	690
Centres, Sash	682—686	686
Chain Bolts	631—633	633
Door Fasteners	579—581	581
Chains, Transom	687	687
Champetor Sash Fasteners	693	693
Chandelier Hooks	746	746
Check Springs	507	507
Checks, Ogden Door	574—578	578
Chest Handles	726	726
Clamps, Cabinet	782	782
Quilting Frame	782	782
Saw	783	783
Cleats, Line	727	727
Climax Lawn Mowers	800	800
Clips, Paper	780	780
Closet Door Knobs	117	117
Clothes Line Hooks	741	741
Pulleys	762	762
Coal Tongs	788	788

C		PAGE
Coat and Hat Hooks	731—737	737
Coil Door Springs	617	617
Collar Hooks	743	743
Colonial Plate Escutcheons	111	111
Rim Locks	16	16
Combination Adjustable Spindles	129	129
Combined Escutcheons	111	111
Communicating Door Locks	25, 26, 54	54
Condensed List Master-keyed Locks	91, 92	92
Corner Brackets, Screen	678	678
Corner Irons, Wrought	616	616
Cottage Shelf Brackets	778	778
Counter Scales	790—793	793
Courtray Lever Handles	128	128
Cracks, Nut	797	797
Crank Handle Knobs	117	117
Cranks, Bell	507	507
Cranks and Rollers	787	787
Cremorne Bolts	647—654	654
Crown Shelf Brackets	780	780
Cup Handles, Flush	113, 114	114
Cupboard Bolts	636	636
Catches	661—663	663
Latches, Lever	663	663
Locks, Rim	663	663
" Mortise	27	27
Turns	664—666	666
Cutters, Tobacco	795	795
Cylinder Keys	109	109
Mortise Dead Locks	30—33	33
" Front Door Locks	69—75	75
" Gate Locks	59	59
" Knob Latches	60—62	62
" " Locks	59, 63, 64	64
" Night Latches	36	36
" Vestibule Latches	69—75	75
Night Latches	3	3
Rim Dead Locks	7, 30—32	32
Screen Door Sets	677	677
Sliding Door Locks	89	89
" " Mortise Locks	33	33
Store Door Mortise Locks	78—80	80
Cylinders, "Reading"	109	109

D		PAGE
Dead Latches, Mortise	344	344
Locks, Cylinder Rim	7	7
" and Door Handles	553	553
" Mortise	27—34	34
" " Store Door	34	34
" Rim	4—7	7
" Sliding Door	33	33
" Store Door	6	6
Directions for Door Checks	577	577
Door Bells	503—506	506
Bells Gong	506	506
" and Push Buttons, Electric Ring	506	506
" Rotary	504, 505	505
Bell Levers	503	503
Bolts, Mortise	624	624
" Square	630	630

D	PAGE
Door Buttons	657
Checks, Ogden	574—578
Fasteners, Chain	579—581
" Safety	581
Handles and Dead Locks	553
" for Dutch Doors	554
" Store { For Designs see }	511—514
" " and Locks { Index of Designs }	515—552
Holders	679
" and Stops	680
Hooks	745
Keys	93—109
Knobs	117—127, 201—428
" Glass	125—127
Knockers	567, 568
Latches, Barn	508
Pulls	201—428, 556—564
" Barn	555
Springs, Coil	617
Stops, Sliding	771
"	680, 681
Double Extension Mortise Flush Bolts	645, 646
Stroke Door Bells	503
Surface Bolts	647—654
Drawer Handles	725
Knobs	717, 718
Mortise Locks	27
Pulls	718—723
Drop Handles and Escutcheons	114
"	113, 114
Druggist Drawer Pulls	723
Dumb Waiter Pulleys	757
"Duplex" Cylinder Mortise Knob Locks	59
Dutch Door Bolts	641
" Locks	23
" Quadrants	581
Design or Art Section	201—428
For Page of any Design	See Index of Designs

E	PAGE
Ebony Door Knobs	118, 120
Eclipse Lawn Mowers	799
Elbow Catches	660
Electric Ring Door Bells	506
Light Pulleys	763
Push Buttons	201—428, 502
Elevator Sliding Door Latches	85
" " Sheaves	766
Empire Lawn Mowers	799
Escutcheons, Cabinet	116, 201—428
Combined	111
and Drop Handles	114
Flush Cup	112, 201—428
Glass Knob	111, 201—428
Indicator	111
Plate	110, 111, 201—428
and Pulls	116, 201—428
Sliding Door	112, 201—428
Wood	110
Espagnolette Bars	656

E	PAGE
Excelsior Lawn Mowers	798
Shutter Bolts	627
Exeter Lever Handles	128
Expansion Bolts for Bommer Hinges	608

F	PAGE
Fast Joint Cast Butts	596
Fasteners, Casement	705—707
Cellar Window	690
Chain Door	579—581
Ice Box	659
Refrigerator	659
Safety Door	581
Sash	691—693
Fasts, Bed	774
Files, Paper	780
Fire Pail Hooks	742
Fish Scalers	796
Fixtures, Grindstone	787
Flat Ship Bolts	637
Shutter Bolts	627
Floor Plates for Square Bolts	628
Spring Hinges, Bommer	607
" " Matchless	609
Flower Pot Brackets	776, 777
Flush Barn Door Pulls	555
Bolts	637—646
" Mortise	642—646
Cup Escutcheons	112, 201—428
" Handles	113, 114
Door "	679
Rings	658
Sash Lifts	700—702
Sliding Door Pulls	81
Trap " Rings	727
Folding Keys	105
Foot Bolts	634, 635
Rests	796
Scrapers	785, 786
Frame Pulleys	749—756
Frames, Card	724
French Window Catches	667
Window Fasteners	707
" Knobs	117
" " and Escutcheons	116
Front Door Mortise Locks	65—75
Door Rim Locks	13

G	PAGE
Garage Sliding Door Latches	85
Gate Latches, Secret	1
Latches	621—623
Locks, Cylinder Mortise	59
Hinges	620, 621
Glass Door Knobs	125—127
Drawer Knobs	717
Knob Escutcheons	111, 201—428
Push Plates	566
Shutter Knobs	717
Golf Lawn Mowers	800

Numerical
Index
A-10

50

G147

P324

505

P1020

P1439

2330

5728 B

Locks
and
Latches

Escutch'ns

Designs

Schools
List of
Finishes

Finishes
for
Woods
Relative
Prices of
Finishes

Hand of
Doors
Special
Work

G	PAGE
Gong Door Bells	506
Gravity Barn Door Catches	660
Blind Hinges	619
Grindstone Fixtures	787
Grips for Door Handles	561, 562

H	
Hand Rail Brackets	775
Handles, Chest	726
Drawer	725
Drop	113, 144
Door and Dead Locks	553
Dutch Door	554
Flush Cup	113, 114
Lever	128
Lifting	725
Store Door	511—514
" " and Locks	515—552
T and Plates	116
Tub	726
Hangers, Barn Door	768, 769
Sash Pole	703
Harness Hooks	743, 744
Hasp and Latch, Barn Door	508
Hasps and Staples, Wrought	615
Hat and Coat Hooks	731—737
Rack Hooks	738—740
Hay Fork Hooks	742
Pulleys	763
Hinge Hasps and Staples	616
Nails	582
Plates	582—586
Hinges, Blind Door	611
Bommer Spring	604—608
" Box Flanged	606
" Mortise Floor	607
" Pipe	605
" Surface Floor	607
" " Spring	604
" " Yoked	605
Gate	620, 621
Gravity Blind	619
Lull and Porter	619
Matchless Floor Spring	609
Refrigerator	610
Spring	617, 618
Surface Blind	619
Toilet	611
Wash Tray	587
Hoisting Pulleys	764
Holder, Door	679
" and Stops	680
Hoods, Letter Box	201—428, 572
Hook Hasps and Staples	615
Sash Lifts	694—696
Hooks, Baggage Check	742
Bird Cage	747, 748
Cabin Door	745
Ceiling	728
Chandelier	746

H	PAGE
Hooks, Clothes Line	741
Collar	743
Door	745
Fire Pail	742
Harness	743, 744
Hat and Coat	731—737
" Rack	738—740
Hay Fork	742
Sash Pull	703
School House	730
Show Case	742
and Staples, Wrought	614
Towel	737
Wardrobe	729
Horizontal Rim Dead Locks	4—6
Rim Knob Latches	1
" " Locks	14—16
" Night Latches	2, 3
Hot House Pulleys	757
Hotel Mortise Knob Locks	54—58
House Bells on Carriages	507

I	
Ice Box Fasteners	659
Incased Swivel Pulleys	764
Indicator Bolts, Toilet	613
Escutcheons	111
Inside Blind Butts	587, 588
Shutter Catches	713
Iron Bench Screws	782
Irons, Corner	616
Porch	774
Sash Cord	704
Waffle	797

J	
Junior Lawn Mowers	804

K	
Keepers and Strikes for Bommer Hinges	608
Keys, Door	93—109
Master	104, 106, 108, 109
Keystone Lawn Mowers	803
Kick Plates	565
Knob Flush Bolts	637
Locks, Horizontal	14—16
" Upright Rim	8—13
Roses	124
Spindles	129
Knobs, Closet Door	117
Door	117—127, 201—428
Drawer	717, 718
and Escutcheons, Cabinet	116, 201—428
French Window	117
Glass Door	125—127
" Shutter and Drawer	717
Mortise Bolt	117
" Crank Handle	117
" T Handle	117

K PAGE

Knobs, Rim Crank T Handle 117
 Screwless Spindle 129
 Slip 124
 Shutter or Sash 716
 Turn 115
 Wood Door 119
 Knockers, Door 567, 568

L

Label Plates 724
 Ladles, Melting 796
 Lamp Brackets 776
 Latch and Bolts, Mortise Knob 24-26
 Latches, Barn Door 508
 Cylinder Night 3
 Elevator Sliding Door 85
 Garage " " 85
 Gate 621-623
 Lever Cupboard 663
 Mortise 18-20
 " Dead 34
 " Knob 19, 20, 60-62
 " Night 35, 36
 " " Cylinder 36
 " Store Door 34
 " Vestibule 65-75
 Office Door 60-64, 68-70, 73
 Rim Knob 1
 " Night 2, 3
 Latches, Secret Gate 1
 Sliding Door 82-86
 " " with Escutcheons 83, 84
 Stable Sliding Door 85, 86
 Thumb 509, 510
 Toilet 612
 Tubular Night 2
 Lavatory Hinges, Bommer's 604-606
 Lawn Mowers 798-803
 Lever Cupboard Catches 663
 Cupboard Latches 663
 " Turns 664
 Handles 128
 Levers and Plates 116, 201-428
 For Door Bells 503
 Letter Box Hoods 201-428, 572
 Box Plates 201-428, 570-573
 Boxes for Apartment Houses 573
 Letters, Bronze 569
 Lifters, Reading Transom 688, 689
 Lifting Handles 725
 Lifts, Sash 201-428, 694-702
 Bar Sash 698, 699
 Flush Sash 700-702
 Sash and Locks 696
 Window 697, 718
 Line Cleats 727
 List Master-Keyed Locks 91, 92
 Lock Sets, See Design Section 201-428
 Strikes, Mortise 90
 Locker Rings 658
 Locks 1-89
 Apartment House 51
 Barn Door Mortise 33
 " " Rim 13

L PAGE

Locks, Bath-room 51
 Car Sash 690
 Colonial Rim 16
 Communicating Door 25, 26, 54
 Cupboard 27, 663
 Cylinder Office 63, 64
 " Mortise Gate 59
 " Rim Dead 7
 " Sliding Door 89
 Duplex Cylinder 59
 Dutch Door 23
 Horizontal Rim Dead 4-7
 " " Knob 14-16
 Hotel Mortise 54-58
 Mortise Asylum 29
 " Bolt 21-23
 " Dead 27-34
 " " Cylinder 30-33
 " Drawer 27
 " Front Door 65-75
 " Knob 37-59, 63, 64
 " Sash 27
 " Store Door 76-80
 " " " Dead 34
 Ornamented Rim 10, 16
 Refrigerator 38
 Rim Sliding Door 13
 Sash Lifts and 696
 " and Props 704
 Seaside Cottage 39
 Sliding Door Cylinder 33
 " " Dead 33
 " " Knob 87
 " " with Pull 88, 89
 " " Stable 86
 Store Door Dead 6
 " " and Handles 515-552
 Three Bolt Mortise 52-57
 Toilet 612
 Upright Rim Dead 6
 " " Front Door 13
 " " Knob 8-13
 " " Store Door 6, 12
 Loose Joint Cast Butts 596, 597
 Pin Cast Butts 599-601
 " Wrought Steel Butts 591, 598
 Lull and Porter Hinges 619

M

Master-Keyed Locks, Condensed List 91, 92
 Master Keys 104, 106, 108, 109
 Match Safes 788
 Matchless Floor Spring Hinges 609
 Mayer's Butts 595
 Melting Ladles 796
 Mending Plates 616
 Metal Boxes for Bommer Hinges 607
 " " " Matchless " 609
 Mill Door Handles 512
 " " " and Locks 525
 Mineral Door Knobs 118
 Monarch Lawn Mowers 802
 Mops, Rubber 796
 Mortise Asylum Locks 29
 Bolt Knobs 117
 " Locks 21-23
 Crank Handle Knobs 117
 Dead Latches 34
 " Locks 27-34
 " " Cylinder 30-33
 " " Store Door 34

Numerical
Index

A-10

50

G147

P324

505

P1020

P1439

2330

5728 B

Locks
and
Latches

Escutch'ns

Designs

Schools
List of
Finishes

Finishes
for
Woods
Relative
Prices of
Finishes

Hand of
Doors
Special
Work

M		PAGE
Mortise Door Bolts		624
Flush Bolts		642—646
Front Door Locks		65—75
Gate Latches		622
" Locks, Cylinder		59
Knob Latch and Bolts		24—26
" Latches		19, 20, 60—62
" Locks		37—59, 63, 64
Latches		18—20
Lock Strikes		90
Night Latches		35, 36
" Cylinder		36
Screen Door Sets		677
Sliding Door Pulls		81
Stall Door Bolts		23
Store Door Dead Locks		34
Mortise Store Door Latches		34
" " Locks		76—80
Turnbuckles		17
Vestibule Latches		65—75
Mosquito Bar Bolts		637
Mowers, Lawn		798—803

N		
Nails, Hinge		582
Name Plates or Signs		569
Narrow Bronze Butts		590
Wrought Steel Butts		589—591, 593
National Lawn Mowers		801
Neck Bolts, Square		627, 629
Newspaper Plates		573
Night Latches, Horizontal Rim		2, 3
Latches, Mortise		35, 36
" Reading Cylinder		3
" Tubular		2
Nipper Lawn Mowers		804
Numbers, Bronze		569
Nut Cracks		797
Nuts and Washers for Bommer Hinges		608

O		
Ogden Door Checks		574—578
Office Door Latches		60—64, 68—70, 73
Locks		63, 64
Ornamented Rim Locks		10, 16

P		
Paper Clips		780
Files		780
Weights		779
Parers, Apple		805, 806
Parliament Shutter Butts		595
Parts for Ogden Door Checks		578
Peerless Lawn Mowers		801
Perfection Window Stop Adjusters		712
Pipe Hinges, Bommer's		605
Plain Bronze Door Knobs		121—123
Bronze Lever Handles		128
Plate Escutcheons		110 111, 201—428
Escutcheons, Colonial		111
Plates, Hinge		582—586
Letter Box		201—428, 570—573
and Levers		116

P		PAGE
Plates, Label		724
Mending		616
Name		569
Newspaper		573
Push, Pull and Kick		565, 566
Sash Pull		703
for Square Bolts		628
and Stubs		712
and T Handle		116
Transom		682—686
Plumb Bobs		784
Porcelain Door Knobs		118, 120
Porch Irons		774
Private Bath-room Mortise Knob Locks		51
Props Sash		704
Pull Plates		565
Pulleys		749—764
Axle		749
Awning		760
Ceiling		757
Clothes Line		762
Dumb Waiter		757
Electric Light		763
Frame		749—756
Hay Fork		763
Hoisting		764
Hot House		757
Screw		758, 759
Side		759, 760
Swing		759
Swivel		764
Tackle		761
Upright		759, 760
Wagon Brake		761
Pulls, Bell		501
Door		201—428, 556—564
Drawer		718—723
Flush Barn Door		555
Sash		703
Slide Bell		501
Sliding Door		81
Push Buttons, Electric		201—428, 502
Plates		201—428, 565, 566
" Glass		566

Q		
Quadrants, Dutch Door		581
Quality Lawn Mowers		802
Quilting Frame Clamps		782
Quoits		796

R		
Rail, Barn Door		770
Sliding Door		771
Read's Stop Screws		712
"Reading" Lawn Mowers		798—803
Sash Fasteners		692
Transom Lifters		688, 689
Refrigerator Catches		659
Fasteners		659
Hinges		610
Mortise Knob Locks		38

R

PAGE

Rests Foot	796
Rim Crank Handle Knobs	117
Cylinder Dead Locks	7
Dead Locks	4-6
" " Store Door	6
Knob Latches	1
" Locks, Horizontal	14-16
Night Latches	2, 3
Screen Door Sets	676
Sliding Door Locks	13
Store " "	6, 12
Upright Front Door Locks	13
" Knob Locks	8-13
Rings, Flush	658
Locker	658
Trap Door	727
Roggin's Latches	509
Rollers, Barn Door	768
Sash	765
Roses, Knob	124
Rosette Shelf Brackets	778
Rotary Door Bells	504, 505
Rubber Mops	796

S

Safes, Match	788
Safety Door Fasteners	581
Sash Bolts	637
Centres or Transom Plates	682-686
Cord Irons	704
Fasteners	691-693
Lifts	201-428, 694-702
" Bar	698, 699
" Flush	700-702
" and Locks	696
Locks and Props	704
" Car	690
" Mortise	27
Pole Hangers	703
Pull Hooks	703
" Plates	703
Rollers	765
and Shutter Sheaves	765, 766
or Window Bolts	637
Saw Clamps	783
Scale Weights	794
Scalers, Fish	796
Scales	789-794
Butcher's	783, 794
Counter	790-793
Tea	789, 790
School House Hooks	730
Scrapers, Foot	785, 786
Screen Corner Brackets	678
Door Brackets	678
" Catches	671-674
" Sets	675-677
Screw Bolts for Bommer Hinges	608
Pulleys	758, 759
Screwless Spindles	129
Screws, Shutter	712

S

PAGE

Screws, Wrought Iron Bench	782
and Washers for Window Stops	712
Seaside Cottage Locks	39
Secret Gate Latches	1
Sets Screen Door	675-677
Sheaves, Sash and Shutter	765, 766
Sliding Door	766, 767
Shelf Brackets	778
Supports	779
Ship Bolts, Flat	637
Flush Bolts	637
Knobs	124
Show Case Catches	659
Hooks	742
Shutter Bars	714, 715
Bolts	627
Butts	595
Catches	713
Hinges, Lull and Porter	619
Knobs, Glass	717
or Sash Knobs	716
Screws	712
Side Pulleys	759, 760
Signs or Name Plates	569
Slide Bell Pulls	501
Sliding Blind Catches	667
Door Escutcheons	112, 201-428
" Keys	107
" Knob Locks	87
" Latches	82-86
" " with Escutcheons	83, 84
" Locks, Cylinder	89
" " Rim	13
" " Stable	86
" " with Pull	88, 89
" Mortise Dead Locks	33
" Pulls	81
" Rail	771
" Rim Locks (Barn)	13
" Sheaves	766, 767
" Stops	771
Sockets, Window Spring Bolt	704
Spindles, Knob	129
Spring Bolts	627-629
Coal Tongs	788
Hinges	617, 618
" Bommer	604-608
" Matchless	609
Springs, Auxiliary	129
Check	507
Coil Door	617
Window	704
Square Bolts, Wrought Steel	628
Bolts	630
Door Bolts	630
Neck "	627, 629
Spring "	627, 629
Stable Sliding Door Latches	85, 86
" " Locks	86
Stair Rail Brackets	775
Stall Door Bolts, Mortise	23

Numerical Index
A-10

50

G147

P324

505

P1020

P1439

2330

5728 B

Locks and Latches

Escutch'ns

Designs

Schools List of Finishes

Finishes for Woods Relative Prices of Finishes

Hand of Doors Special Work

S	PAGE
Staples, Hasps and	615, 616
Hooks and	614
for Square Bolts	628
Wrought Steel	614
Stays, Barn Door	768
Transom	687
Steel Mortise Locks	38
Sterling Lawn Mowers	803
St. Louis Gate Latches	623
Stop Screws and Washers	712
Stops, Door	680, 681
Sliding Door	771
Store Door Handles	511—514
Door Handles and Locks	515—552
“ “ “ “ Cylinder	526—552
“ Hinge Hasps and Staples	616
“ Latches, Mortise	34
“ Mortise Dead Locks	34
“ “ Locks	76—80
“ Rim Locks	6, 12
“ “ Dead Locks	6
Store Truck Casters	772, 773
Storm Window Fasteners	706
Strikes for Cremorne Bolts	655
and Keepers for Bommer Hinges	608
Strikes for Mortise Locks	90
Stubs and Plates	712
Supports, Shelf	779
Surface Blind Hinges	619
Gate Latches	622, 623
Sash Centres	684, 685
Swing Pulleys	759
Swivel “	764

T

T Handle Knobs	117
T Handles and Plates	116
Tackle Pulleys	761
Taplin's Window Stop Adjusters	712
Tea Scales	789, 790
Tenons, Blind Slat	712
Three Bolt Mortise Knob Locks	52—57
Thumb Latches	509, 510
Tobacco Cutters	795
Toilet Bolts	612
Hat and Coat Hooks	737
Hinges	611
Indicator Bolts	613
Latches	612
Locks	612
Tongs, Coal	788
Towel Hooks	737
Tower Bolts	625
Transom Catches	668—670
Chains	687
Lifters, “Reading”	688, 689
Plates or Sash Centres	682—686
Stays	687
Trap Door Rings	727
Truck Casters	772, 773
Tub Handles	726

T

	PAGE
Tubular Night Latches	2
Turnbuckles, Japanned and Galvanized	713
Mortise	17
Turn Knobs	115
“ and Bells in Sets	504, 505
Turns, Cupboard	664—666
Twine Boxes	781
Types of Mortise Lock Strikes	90

U

Upright Gate Latches	621
Pulleys	759, 760
Rim Dead Locks	6
“ Front Door Locks	13
“ Knob Locks	8—13
“ Store Door Locks	6—12

V

Vassar Spindles	129
Vestibule Mortise Latches	65—75

W

Waffle Irons	797
Wagon Brake Pulleys	761
Wardrobe Hooks	729
Wash Tray Hinges	587
Washers and Nuts for Bommer Hinges	608
Weights, Paper	779
Weights, Scale	794
Well Wheels	764
Window Catches, French	667
Fasteners, Cellar	690
Lifts	697, 718
or Sash Bolts	637
Screen Corner Brackets	678
Spring Bolts	704
“ Bolt Sockets	704
Springs	704
Stop Adjusters	712
“ Screws and Washers	712
Wood Door Knobs	119
Plate Escutcheons	110
Wrought Bent Corner Irons	616
“ Hasps and Staples	615
Brass Square Spring Bolts	629
Bronze Butts	590, 593, 602
“ Door Knobs	121
Cupboard Turns	666
Flat Corner Irons	616
Gate Latches	623
Hasps and Staples	615
Hook Hasps and Staples	615
Hooks and Staples	614
Iron Bench Screws	782
Mending Plates	616
Steel Barrel Bolts	625
“ Butts	587, 589, 591, 593, 598
“ Spring Bolts	628
“ Square “	628
“ Staples	614
“ “ for Square Bolts	628
“ Wash Tray Hinges	587

INDEX OF DESIGNS

DESIGN	METAL	ESCUTCHEONS PAGE	TRIMMINGS PAGE	LOCK SETS PAGE	S. D. HANDLES PAGE
Altena	Cast Bronze	201	201	202	552
Americus	" "	203	203	204	542
Argos	" "	205	205	206	...
Arlington	" "	207	208	209	521 537
Arno	" "	210	211	212	545
Arundel	" "	213	213	213	537
Astoria	" "	544
Athol	" "	551
Avon	" "	214	214	215	...
Beaumont	" "	216	216	216	...
Belfort	" "	217	218	219	524 546
Benton	" "	220	220	221	533 534
Berkley	" "	222	222	223	538
Beverly	" "	224	224	224	533
Breslau	" "	225	225	226	523 545
Bristol	" "	227	227	228	535
"	Wrought Bronze	229	229	230 to 235	...
Celita	" "	236	236	237	...
Chantilly	Cast "	238	238	239	...
Chatham	" "	533
Chelsea	Wrought Steel and Bronze	240	240	241	...
Clifton	" " " "	242	242	243	...
Clinton	Cast Bronze	244	244	245	533 535
"	Wrought Bronze	246	246	247 to 252	...
Colonial	Cast Bronze	253	254	255	520 536
Colorado	" "	256	256	257	550
Columbian	" "	258	259	260	520 542
Concord	" "	261	262	263	520 530
"	Wrought Steel and Bronze	264	264 265	266 to 274	515 519 529
Courtray	Cast Bronze	275	275	276	544 554
Creston	Wrought Steel and Bronze	277	277	278	...
Dartmouth	" " " "	279	279	280	...
Doris	Bronze Plated on Iron	281	281	281	...
Dover	Cast Bronze	282	282	283	520 530
Edgemont	" "	284	285	286	538
Elba	Wrought Steel	287	287	287	...
Elise	" " and Bronze	288	288	289	517 541
Epirus	Cast Bronze	290	290	291	...
Esternay	" "	292	292	293	...
Eulalia	Wrought Bronze	294	294	294	...
Evona	" "	295	295	296	...
Exeter	Cast "	297	297	297	...
Falmouth	" "	298	299	300	521 536
"	Wrought "	301	301	301	...
Farnham	" Steel, Cast and Wrought Bronze	302	302	303	...
Fenmore	Cast and Wrought Bronze	304	304	305	...
Franciscan	" Bronze	306	306	306	...
Gemona	" "	308	308	309	...
"	Bronze Plated on Iron	307	307	307	...
Gerberoy	Cast Bronze	310	310	311	551
Gotha	" "	312	312	313	550
Hamilton	" "	314	314	314	...
Hampton	" "	315	315	316	520 538

INDEX OF DESIGNS

CONTINUED

DESIGN	METAL	ESCUTCHEONS PAGE	TRIMMINGS PAGE	LOCK SETS PAGE	S. D. HANDLES PAGE
Helena	Cast Bronze	317	317	318	...
Herkimer . . .	" "	319	319	320	533, 534
Kenwood . . .	" "	321	322	323	522, 539
La Grande . .	" "	324	324	325	542
Landon	" "	326	326	327	523, 543
Lenox	" "	328	328	329	538, 554
Lepanto	" "	330	330	331	458
Lydia	" "	332	332	333	522, 547
Majestic . . .	" "	334	335	336	546
Malden	Bronze Plated on Iron	337	337	337	...
Mantua	Cast Bronze	338	339	340	523, 543
Marsala	" "	341	341	342	...
Milo	" " and Bronze Plated	343	344	345	517, 541
Mona	" " " " " "	517, 541
Montello . . .	Wrought Steel and Bronze	346	...	347, 348	...
Montrose . . .	" " " "	349	349	350, 352	...
Mornay	Cast Bronze	353	353	353	...
Mortain	" " and Bronze Plated	354	355	356	517, 541
Mt. Vernon . .	" "	357	358	359	521, 537
Mycena	" "	360	360	361	547
Neris	" "	362	362	363	...
Norwood	Wrought Steel	364	364	365	...
Novara	Cast Bronze	366	366	367	...
Onidus	" "	368	368	369	...
Ostend	" "	370	370	371	552
Oxford	" "	372	372	373	...
Pelham	Wrought Bronze	374	374	375	...
Plain	Cast "	110, 111, 376	376	377	526, 531, 532
"	Solid Wrought Bronze	110, 378	...	379	{ 513, 514, 515, 518, 526, 528, 553.
"	Wrought Steel and Bronze	110, 380	...	381 to 384	515, 518, 527
Plympton . . .	" Bronze	385	385	386	...
Portsmouth . .	Cast Bronze	386	387	388	540
Putnam	Wrought Bronze	389	389	390	...
Quincy	Cast "	391	391	392	543
Raleigh	" "	393	393	394	540
Reole	Bronzed Plated on Iron	395	395	395	...
Richmond . . .	Cast Bronze	396	397	398	522, 539
Rocroy	" "	399	399	399	..
Savenay	" "	400	401	402	524, 545
Savoy	" "	403	404	405	546
St. Omer	" "	406	406	407	548
St. Remy	" "	408	409	410	...
Selinus	" "	411	411	412	548
Shelton	Wrought Bronze	413	413	414	...
Shirley	" "	415	415	416	530
Strasburg . . .	Cast "	417	417	418	549
Taranto	" "	524, 547
Tarascon	" "	419	419	420	...
Toulon	" "	421	421	422	...
Verdun	" "	423	423	424	...
Westminster . .	" "	425	425	426	549
Windsor	" "	513-516
Worcester . . .	" "	427	427	428	549

Designs

Schools
List of
Finishes

Finishes
for
Woods
Relative
Prices of
Finishes

Hand of
Doors
Special
Work

GLASS DOOR KNOBS

COMPLETE WITH SCREWS

CUTS ONE-THIRD SIZE



No. 122RB
No. 122RP, same with Plain Rose



No. 222RB
No. 222RP, same with Plain Rose



No. 322RB
No. 322RP, same with Plain Rose



No. 422RB
No. 422RP, same with Plain Rose



No. 522RB
No. 522RP, same with Plain Rose



No. 622RB
No. 622RP, same with Plain Rose



No. 722RB
No. 722RP, same with Plain Rose

CUTS SHOW KNOBS WITH BEADED ROSES

FLAT ROUND KNOBS
Bronze Metal Shank and Roses
5/16 inch Plain Spindle

NUMBERS	INCH	PLAIN ROSES	FINISH			
			1	24	25	
122RP	2 1/4	Pressed Knobs . . .	\$ 27.00	29.75	31.15	Per doz.
222RP	2 1/4	Cut " . . .	60.75	63.50	64.90	"
322RP	2 1/4	" " . . .	74.25	77.00	78.40	"
422RP	2 1/4	" " . . .	74.25	77.00	78.40	"
522RP	2 1/4	" " . . .	74.25	77.00	78.40	"
622RP	2 1/4	" " . . .	81.00	83.75	85.15	"
722RP	2 1/4	" " . . .	94.50	97.25	98.65	"

NUMBERS	INCH	BEADED ROSES	FINISH			
			1	24	25	
122RB	2 1/4	Pressed Knobs . . .	\$ 27.00	29.75	31.15	Per doz.
222RB	2 1/4	Cut " . . .	60.75	63.50	64.90	"
322RB	2 1/4	" " . . .	74.25	77.00	78.40	"
422RB	2 1/4	" " . . .	74.25	77.00	78.40	"
522RB	2 1/4	" " . . .	74.25	77.00	78.40	"
622RB	2 1/4	" " . . .	81.00	83.75	85.15	"
722RB	2 1/4	" " . . .	94.50	97.25	98.65	"

For above Knobs without Roses, deduct \$2.45
Glass Knobs are furnished regularly with Large Shank and Adjustable Spindle
In ordering be particular to state exact thickness of door

GLASS DOOR KNOBS

With Rose and Escutcheons Combined

Can be furnished to order in all designs

Cut shows Flat Round Glass Knob with Putnam Escutcheon

PLATE ESCUTCHEONS

Especially suitable for use with Glass Knobs are

	WITHOUT DROP	WITH DROP
Plain Bronze, Nos.	P1109, P1113	P1110
Other Designs "	1104	1110



No. 122R x 1231/4
Putnam

AMERICUS

CAST BRONZE ROCOCO

CUTS ONE-THIRD SIZE



No. 1392 x 2846



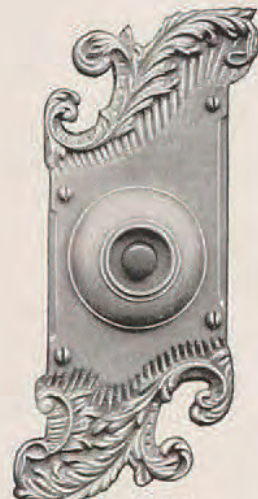
No. 1231 x 2822



No. 1105



No. 1432



No. 1411



No. 1318

NUMBERS	INCH	CAST BRONZE	1 FINISH	24 & 25 FINISH
ESCUTCHEONS				
1105	2¼ x 1½	Plate Escutcheons Doz.	\$ 3.95	4.35
1231	10½ x 3½	Rose and Escutcheons combined "	31.65	33.00
T1232	"	" " " " " "	35.00	36.35
01254	12½ x 3½	" " " " " Each	3.45	3.65
1254	"	" " " " " "	3.45	3.65
01259	10½ x 3½	" " " " " "	2.65	2.75
1259	"	" " " " " "	2.65	2.75
T1322	"	" " " " " Doz.	35.00	36.35
1333	11½ x 3½	" " " " " Each	3.00	3.10
T1333	"	" " " " " "	3.30	3.40
1343	"	" " " " " Doz.	39.60	40.80
1372	14 x 4	" " " " " Each	3.95	4.05
T1372	"	" " " " " "	4.25	4.35
T1373	8½ x 3½	" " " " " "	2.25	2.35
1375	11½ x 3½	" " " " " "	3.00	3.10
1392	14 x 4	" " " " " "	3.95	4.05
T1392	"	" " " " " "	4.25	4.35
T1393	8½ x 3½	" " " " " "	2.25	2.35
1395	11½ x 3½	" " " " " "	3.00	3.10
T1396	"	" " " " " "	3.30	3.40
1432	9¼ x 3½	Flush Cup Escutcheons Set of four	9.75	10.20
DOOR KNOBS—Without Roses				
002822	2¼ x 2¼	⅝ inch Plain Spindle Doz.	23.35	25.00
002824	"	⅝ " Swivel " "	25.00	26.65
002826	"	⅜ " " " " "	25.00	26.65
002844	2½ x 2¼	⅝ " " " " "	26.65	28.35
002846	"	⅜ " " " " "	26.65	28.35
			If wanted with Roses add to list price Doz. pair	
			3.00	3.35
MISCELLANEOUS TRIMMINGS				
2802	7½ x 3½	Bell Pulls, 2¼ inch Round Knobs Doz.	33.35	35.85
1411	7 x 3½	Push Buttons, 1 Rubber Button, "	40.00	42.00
1336	3½ x 9½	Letter Box Plates, Outside Drop "	30.00	32.65
1346	"	" " " with Inside Plate "	35.00	39.00
H1336	"	Letter Box Hoods "	30.00	32.65
1884	9 x 2¾	Mortise Flush Bolts, 8 to 42 inch "	35.00	38.00
2165	14 x 4	*Door Pulls, Curved Handle . . . "	67.80	69.10
2276	"	Push Plates "	46.95	48.25
2276	20¼ x 4	" " "	80.30	81.60
1318	1¾ x 5¾	Flush Sash Lifts "	11.00	11.65
1468	1¾ x 4½	Drawer Handles "	23.35	25.00
*Mention Hand Wanted				

Other Finishes suitable for this Design are Nos. 31, 33, 35, 37 42

AVON

CAST BRONZE ELIZABETHAN

CUTS ONE-THIRD SIZE



No. 1392 x 2846



No. 1231 x 2822



No. 1411

NUMBERS	INCH	CAST BRONZE	I FINISH	24 & 25 FINISH
ESCUTCHEONS				
1231	9x3 $\frac{3}{8}$	Rose and Escutcheons combined	Doz. \$ 33.35	34.65
T1232	"	" " " "	" 36.65	38.00
1372	10 $\frac{1}{4}$ x3 $\frac{7}{8}$	" " " "	Each 3.20	3.25
T1372	"	" " " "	" 3.50	3.55
T1373	9x3 $\frac{3}{8}$	" " " "	" 3.05	3.20
1375	10 $\frac{1}{4}$ x3 $\frac{7}{8}$	" " " "	" 3.20	3.25
1392	"	" " " "	" 3.20	3.25
T1392	"	" " " "	" 3.50	3.55
T1393	9x3 $\frac{3}{8}$	" " " "	" 3.05	3.20
1395	10 $\frac{1}{4}$ x3 $\frac{7}{8}$	" " " "	" 3.20	3.25
T1396	"	" " " "	" 3.50	3.55
1432	9x3 $\frac{3}{8}$	Flush Cup Escutcheons Set of four	13.90	14.35
DOOR KNOBS—Without Roses				
002822	2 $\frac{1}{4}$ x2 $\frac{1}{4}$	$\frac{5}{16}$ inch Plain Spindle Doz.	30.00	31.65
002824	"	$\frac{5}{16}$ " Swivel "	" 31.65	33.35
002826	"	$\frac{3}{8}$ " " "	" 31.65	33.35
002844	2 $\frac{1}{2}$ x2 $\frac{1}{4}$	$\frac{5}{16}$ " " "	" 35.00	36.65
002846	"	$\frac{3}{8}$ " " "	" 35.00	36.65
		If wanted with Roses add to list price . . . Doz. pair	3.00	3.35
MISCELLANEOUS TRIMMINGS				
1411	6 $\frac{5}{8}$ x2 $\frac{7}{8}$	Push Buttons, 1 Rubber Button Doz.	40.00	42.00
2166	12x3 $\frac{1}{4}$	Door Pulls, extra heavy	" 133.35	133.35
1318	2x4 $\frac{7}{8}$	Flush Sash Lifts	" 16.65	17.35

Other Finishes suitable for this Design are Nos. 31, 33, 35, 37R, 42

6 in Pulls to match

CRESTON

WROUGHT STEEL AND WROUGHT BRONZE

CUTS ONE-THIRD SIZE



No. 1392 1/4 x 2646 1/4



No. 01253 1/4 x 2624 1/4
No. 0253 1/4 x 824 1/4



Nos. 104 1/4 and 1104 1/4



No. 131 1/4 x 822 1/4
No. 1131 1/4 x 2622 1/4



Nos. 432 1/4 and 1432 1/4



Nos. 318 1/2 and 1318 1/4

NUMBERS	INCH	WROUGHT STEEL	11, 24 & 25 FINISH
ESCUTCHEONS			
104 1/4	1 3/4 x 1 1/8	Plate Escutcheons Doz.	\$ 0.60
131 1/4	6 1/2 x 2 1/8	Rose and Escutcheons combined "	3.15
0253 1/4	9 3/4 x 2 3/4	" " " " Each	.55
0258 1/4	6 1/2 x 2 1/8	" " " " "	.26
432 1/4	5 1/2 x 2 3/8	Flush Cup Escutcheons Set of four	1.25
DOOR KNOBS—Without Roses			
00822 3/4	2 1/4 x 2 1/4	5/16 inch Plain Spindle Doz.	8.00
00824 3/4	"	5/16 " Swivel " "	9.65
If wanted with Roses, add to list price Doz. pair			1.20
MISCELLANEOUS TRIMMINGS			
165 1/4	9 3/4 x 2 3/4	Door Pulls, Curved Handle Doz.	10.75
276 1/4	"	Push Plates "	6.55
318 1/4	1 1/2 x 3 1/4	Flush Sash Lifts "	1.40
0439	3 1/2 x 1 5/8	Cupboard Turns "	5.00
WROUGHT BRONZE			
NUMBERS	INCH	WROUGHT BRONZE	1, 24 & 25 FINISH
ESCUTCHEONS			
1104 1/4	1 3/4 x 1 1/8	Plate Escutcheons Doz.	\$ 1.35
1131 1/4	6 1/2 x 2 1/8	Rose and Escutcheons combined "	5.00
T1132 1/4	"	" " " " "	8.30
01253 1/4	9 3/4 x 2 3/4	" " " " Each	1.10
01258 1/4	6 1/2 x 2 1/8	" " " " "	.42
1372 1/4	9 3/4 x 2 3/4	" " " " "	1.10
T1372 1/4	"	" " " " "	1.40
T1373 1/4	6 1/2 x 2 1/8	" " " " "	.72
1375 1/4	7 1/2 x 2 1/4	" " " " "	.42
1382 1/4	9 3/4 x 2 3/4	" " " " "	1.10
T1382 1/4	"	" " " " "	1.40
T1383 1/4	6 1/2 x 2 1/8	" " " " "	.72
1385 1/4	7 1/2 x 2 1/4	" " " " "	.42
1392 1/4	9 3/4 x 2 3/4	" " " " "	1.10
T1392 1/4	"	" " " " "	1.40
T1393 1/4	6 1/2 x 2 1/8	" " " " "	.72
1395 1/4	7 1/2 x 2 1/4	" " " " "	.42
T1396 1/4	"	" " " " "	.72
1432 1/4	5 1/2 x 2 3/8	Flush Cup Escutcheons Set of four	1.80
DOOR KNOBS—Without Roses			
002622 1/4	2 1/4 x 2 1/4	5/16 inch Plain Spindle Doz.	12.65
002624 1/4	"	5/16 " Swivel " "	14.30
002626 1/4	"	3/8 " " " "	14.30
002646 1/4	2 1/2 x 2 1/4	3/8 " " " "	15.55
If wanted with Roses, add to list price Doz. pair			1.65
MISCELLANEOUS TRIMMINGS			
1411 1/4	4 x 2 1/8	Push Buttons, 1 Rubber Button Doz.	6.25
2165 1/4	9 3/4 x 2 3/4	Door Pulls, Curved Handle "	31.20
2276 1/4	"	Push Plates "	10.35
1318 1/4	1 1/2 x 3 1/4	Flush Sash Lifts "	1.65
1468 1/4	1 1/4 x 3 3/8	Drawer Handles "	6.25

Other Finishes suitable for this Design are Nos. 31, 34, 35, 37

