

YALE

LOCKS *and* HARDWARE



The Yale & Towne Mfg. Company

General Office Building and Exhibit Rooms:
9 East 40th Street, New York City

Works: Stamford, Conn.

The Yale & Towne Mfg. Co., Chicago, Ill. . . . (77 East Lake Street)
Canadian Yale & Towne, Ltd., St. Catharines, Ontario. (Canadian Works)
Yale & Towne, Ltd., . . . Paris, France. . (107 Avenue Parmentier)
The Yale & Towne Co., . . London, E. C., Eng. (17-20 West Smithfield)

General Index

For Designs arranged *alphabetically* by name see page 10, and by *symbol* see page 11.
For Numerical Index see page 12.

A	Page	C—Continued	Page	D—Continued	Page
Adjustable ball-bearing top pivot	348	Casement fasteners	236	Door pulls	211
Adjusters, casement	133	Catches, cupboard	162	“ “ sliding	211
Alphabets	203	“ elbow	162	“ stop and hook	187
Auxiliary spring attachment	205	“ screen door	165	“ stops	230
B		“ secret gate	163	Doors, hand and bevel of	43
Back plates, letter hole	200	“ transom	163	Double-acting closing floor hinge	346
Bank and safe locks	28	Ceiling hook	187	“ extension bolts, mortise	144
Bar sash lifts	227	Cellar window fastener	168	“ “ “ rim	143
“ shutter	229	Centers, sash	228	Drawer knobs, glass	196
Barrel bolts	137	“ transom	228	“ “ metal	196
Bars, push	220	Chain bolts	138	“ pulls	168
Bevel of doors	43	“ door fasteners	168	Drop ring handles	233
Bit of History, A.	30	“ hoists	29	Duplex door stop	231
Blanks, key	127	“ transom	235	Dutch door bolt	236
Bolt, Dutch door	236	Chutes, letter hole	201	E	
Bolt knobs, mortise	192	Closer, screen door	350	Elbow catches	162
Bolts, barrel	137	Closet spindles	240	Electric hoists	29
“ cased	137	Closing devices, door	342	Emblematic door knobs	193
“ chain	138	Club house boxes	203	“ hardware	29
“ cremone	145	Coat and hat hooks	187	Escutcheons, cup	169
“ cupboard	137	Communicating door locks	80	“ thread	189
“ extension	141	Construction, door closer	344	Espagnolette bolts	156
“ espagnolette	156	Corner bracket	352	Extension bolts, mortise	141
“ fire exit	148	Cremone bolts	145	“ “ “ double	144
“ flush	139	Cupboard bolts	137	“ “ rim	143
“ foot	138	“ catches	162	“ “ “ double	143
“ indicator	199	“ turns	167	F	
“ lavatory	199	Cup escutcheons	169	Factory lock equipment	29
“ mortise	63	D		Fasteners, casement	236
“ mortise extension	141	Dead locks, mortise	63	“ cellar window	168
“ “ double extension	144	“ “ rim	52	“ chain door	168
“ mortise indicator	199	Designs, alphabetically by name	10	Figures	203
“ necked	137	“ “ “ symbol	11	Finishes, description of	40
“ rim double extension	143	“ by schools	244	“ list of	41
“ “ extension	143	“ with emblems	315	“ sample board of	39
“ “ indicator	199	Door butts	160	Fire door locks	126
Boxes, club and office letter	203	“ catches, screen	165	“ exit bolts	148
“ letter	203	“ closer construction	344	Flat bracket	352
“ post office	29	“ closer and holder, Yale	345	“ “ for Gothic doors	353
Brackets, door closer	351	“ “ article	342	Floor hinge, door closing double	346
“ hand rail	188	“ “ screen	350	acting	346
Buttons, push	221	“ “ Yale	343	Floor hinge, door closing single	349
Butts, door	160	“ closing devices	342	acting	349
“ shutter	160	“ fasteners, chain	168	Flush bolts	139
“ transom	160	“ handles, store	170	“ bracket	353
C		“ holders	232	Flush sash lifts	226
Cabin door hooks	188	“ hooks, cabin	188	Foot bolts	138
Cabinet and trunk locks	28	“ knobs, emblematic	193	French window locks	72
Care of locks	36	“ “ glass	194	Front door locks	93
Cased bolts	137	“ “ metal	190		
Casement adjusters	133	“ “ pottery	192		
		“ knockers	197		
		“ latches, screen	165		

S

	Page
Sash centres	228
“ hooks	188
“ lifts, bar	227
“ “ flush	226
“ “ hook	227
“ sockets	229
School house latch	83, 92
Screen door catches	165
“ “ closer	350
“ “ latches	165
Secret gate catches	163
Sets, mono-lock	107
Shelf rests	229
“Shut-out” keys	89
Shutter bars	229
“ butts	160
“ knobs, glass	196
“ “ metal	196
Single-acting door closing floor hinge	349
Sliding door latch	102
“ “ locks	103
“ “ pulls	211
Society building hardware	29
Sockets, sash	229
Soffit brackets	352
“ “ for Gothic door	353
“ “ special, for twin doors	353
“ brackets, universal	353

S—Continued

	Page
Special offset bracket for screen	350
door closers	350
Special products	28
“ soffit bracket for twin doors	353
Spindles	240
Standard finishes, list of	41
Stays, transom	235
Stops, door	230
“ duplex door	231
Store door handles	170
“ “ “ (tri-plate)	176
“ “ latches	100
“ “ locks	100
Strikes, lock	242
Swing latches	199

T

Tee handle plates	224
“ handles	232
Thread escutcheons	189
Thumb-turn plates	224
Thumb-turns	234
“ “ and plates, (store door)	186
Top pivot, adjustable, ball bearing	348
“ “ improved “ “	349
Trade marks, patents, etc.	6

T—Continued

	Page
Transom butts	160
“ catches	163
“ centres	228
“ chains	235
“ stays	235
Trim, lavatory	199
“ letter hole	200
Tri-plate store door handles	176
Trunk locks	28
Turnbuckles, mortise	236
“ rim	237
Turns, cupboard	167

U

Universal soffit bracket	353
------------------------------------	-----

V

Vestibule latches	93
-----------------------------	----

W

Window fastener, cellar	168
“ guard, mortise	229

Designs arranged Alphabetically

For arrangement by *Symbols* see page 11.

Design	School	Page	Design	School	Page
Alameda	Mission	304	Lancaster	Colonial	152
Ashby	Elizabethan	270	Lorient	Louis XVI	208
Athens	Greek	288	Lorraine	" "	302
			Lydian	328
Beauvais	French Gothic	282			
Biarritz	" Renaissance	209	Malaga	Mission	308
Braintree	Colonial	178, 186, 197, 221	Meaux	Louis XVI	301
Bristol	"	248	Menin	Louis XIV	294
Burlington	"	247	Mystic	Colonial	180, 181, 186, 213, 221
Chatillon	Louis XVI	298	Nantes	Louis XIV	295
Chester	Colonial	249	Navarro	Louis XV	175
Coburg	German Gothic	286	Newcastle	Georgian	280
Cologne	" "	284	Newport	Colonial	181, 182, 186, 213, 221
			Nubian	330
Dartmouth	Colonial	252			
"	Mono-lock	122	Oporto	French Renaissance	185, 186, 221
Dedham	Colonial	251			
Dreux	French Renaissance	312	Pavian	332
Drouet	Louis XVI	300	Piedmont	Colonial	258
			Plain, BP	225
Easton	Colonial	254	" BT	324
"	Mono-lock	120	" DP	225
Endicott	Colonial	255	" DT	324
Everett	"	256	" GN	322
"	Mono-lock	121	" GR	320
Evereux	Louis XIV	292	" " Mono-lock	119
			" GT	318
Fairfax	Colonial	154	" " Mono-lock	112-118
Fleury	Louis XV	297	Putney	Colonial	153
Florian	175			
Folkstone	Adam	245	Quebec	Colonial	182, 186, 221
			Queenstown	"	260
Gateshead	Adam	246	Quinton	"	184, 186
Gramont	Empire	277			
Guernsey	Elizabethan	272	Riberac	Louis XIV	296
			Rubian	334
Hadley	Colonial	180, 186, 221	Rudgwick	Elizabethan	274
Harrow	Elizabethan	273			
Hatton	Tudor Gothic	287	Salem	Colonial	197
Hendon	English "	278	Stonington	"	262
			Stratford	Elizabethan	275
Inwood	Colonial	257	Syrian	336
Ionian	326			
			Trianon	Louis XVI	208, 225
Jackson	Mission	306	Utopian	338
"	Mono-lock	124	Urbita	Mission	305
Kastania	Greek	290	Vergennes	Henry II	291
Kempton	Colonial	258	Vigone	Roman	314
Khartoum	Egyptian	281			

Design	School	Page	Design	School	Page
Warwick	Colonial	264	Yardian		341
"	Mono-lock	123	Yattan	Colonial	183, 186, 221
Wellesley	Colonial	265	York	English Gothic	279
Weymouth	"	266	Yorktown	Colonial	269
Wilton	"	267	Yuma	Mission	310
Winonian	"	340	"	Mono-lock	125
Winthrop	"	268			
Weyanoke	"	157			

Designs arranged by Symbol

For arrangement alphabetically by *Name* see page 10.

Symbol	Design	Page	Symbol	Design	Page	Symbol	Design	Page
AI	Ionian, steel	326	IE	Endicott	255	PF	Fairfax	154
AL	Lydian, "	328	IG	Gramont	277	PN	Newport	181, 182, 186, 213, 221
AN	Nubian, "	330	IQ	Quebec	182, 186, 221	PW	Weymouth	266
AP	Pavian, "	332	IW	Wilton	267			
AR	Rubian, "	334				QC	Coburg	286
AS	Syrian, "	336	JD	Dedham	251	QN	Newcastle	280
AU	Utopian, "	338	JW	Warwick	264	QY	Yattan	183, 186, 221
AW	Winonian, "	340	"	" Mono-lock	123			
			KA	Alameda	304	RC	Cologne	284
BP	Plain	225	KE	Easton	254	RK	Khartoum	281
BT	"	324	"	" Mono-lock	120	RN	Nantes	295
			KK	Kastania	290	RT	Trianon	208, 225
CI	Ionian, brass	326	KM	Meaux	301	RW	Winthrop	268
CN	Nubian, "	330	KR	Riberac	296			
CP	Pavian, "	332	KW	Weyanoke	157	SA	Ashby	270
CR	Rubian, "	334				SB	Braintree	178, 186, 197, 221
CS	Syrian, "	336	LI	Inwood	257	SD	Dreux	312
CU	Utopian, "	338	LL	Lancaster	152	SE	Evereux	292
CW	Winonian, "	340	LO	Oporto	185, 186, 221	SF	Folkstone	245
CY	Yardian, "	341	LQ	Quinton	184, 186	SG	Guernsey	272
						SH	Harrow	273
DP	Plain	225				SP	Putney	153
DT	"	324				SW	Wellesley	265
			MB	Biarritz	209			
EF	Florian, iron	175	MC	Chatillon	298	TA	Athens	288
			MG	Gateshead	246	TD	Drouet	300
FW	Winonian, iron (cast)	340	MR	Rudgwick	274	TE	Everett	256
			MY	York	279	"	" Mono-lock	121
GN	Plain	322				TH	Hendon	278
GR	"	320	NC	Chester	249	TM	Mystic	180, 181, 186, 213, 221
"	" Mono-lock	119	NK	Kempton	258	TS	Stonington	262
GT	"	318	NM	Menin	294			
"	" Mono-lock	112-118	NU	Urbita	305	UB	Bristol	248
GW	Winonian, brass (cast)	340	NY	Yuma	310	UH	Hadley	180, 186, 221
			"	" Mono-lock	125	UM	Malaga	308
HB	Beauvais	282				UV	Vigone	314
HD	Dartmouth	252	OH	Hatton	287			
"	" Mono-lock	122	OJ	Jackson	306	VS	Stratford	275
HF	Fleury	297	"	" Mono-lock	124			
HP	Piedmont	258	OL	Lorraine	302			
HQ	Queenstown	260	ON	Navarro	175			
HS	Salem	197	OV	Vergennes	291			
HY	Yorktown	269						

Handles, Store Door

Tri-plate handles



No. CP4534 Pavian
Colonial school

No. CS4534 Syrian
Colonial school

No. CU4534 Utopian
Colonial school

No. LO7634 Oporto
French Renaissance

Number	Material (Wrought)	Length, over all	Cylinder Plate	Top Plate	Bottom Plate	Grip	Length of Grip, center to center	Length of Grip, over all
CP4534	Bronze or brass	14 $\frac{1}{8}$ in.	2 $\frac{1}{4}$ in. dia.	3 $\frac{1}{8}$ x 2 in.	3 $\frac{1}{8}$ x 2 in.	No. 270	5 $\frac{5}{8}$ in.	6 $\frac{3}{4}$ in.
CS4534	"	14 $\frac{1}{4}$ "	2 $\frac{1}{4}$ x 2 $\frac{1}{4}$ in.	3 $\frac{1}{2}$ x 1 $\frac{3}{4}$ "	3 $\frac{1}{2}$ x 1 $\frac{3}{4}$ "	" 60	" "	" "
CU4534	"	" "	" " "	" " "	" " "	" 270	" "	" "
LO7634	Cast bronze or brass	15 $\frac{7}{8}$ "	2 $\frac{7}{8}$ x 2 $\frac{3}{8}$ "	6 $\frac{1}{8}$ x 3 $\frac{3}{8}$ "	" 91	9 $\frac{1}{8}$ "

For locks, Nos. 428, 414 $\frac{1}{4}$ (excepting for LO7634), 432 $\frac{1}{4}$, 472 $\frac{1}{4}$ and 426 $\frac{1}{4}$ series, and No. 401 (omitting cylinder plate), which may be associated with these handles, see pages 98, 100, 101 and 102.

For locks, Nos. 414D, 432D and 482, add ten to list numbers, thus: CP4544, etc. See page 186 for illustrations of thumb-turns and plates.

When ordering, give list numbers of handle and lock, and finish. For finishes, see page 40.

Knobs, Door



FIG. 1 MASONIC
2 1/4 in. only



FIG. 2 MASONIC
2 1/2 in. only



FIG. 3 Y.M.C.A.
2 1/4 and 2 1/2 in.



FIG. 4 K.of P.
2 1/2 in. only



FIG. 5 Y.W.C.A.
2 1/2 in. only



FIG. 6 ODD FELLOWS
2 1/4 and 2 1/2 in.



FIG. 7 CHURCH
2 1/4 and 2 1/2 in.



FIG. 8 GOVERNMENT
2 1/2 in. only



FIG. 9 ELKS
2 1/2 in. only



FIG. 10 ELKS
2 1/2 in. only



FIG. 11 ELKS
2 1/4 and 2 1/2 in.



FIG. 12 EAGLES
2 1/4 and 2 1/2 in.



FIG. 13 MUNICIPAL
2 1/4 in. only



FIG. 14 RAILROAD
2 1/4 in. only



FIG. 15 INSURANCE
2 1/4 and 2 1/2 in.



FIG. 16 BANK
2 1/4 in. only



FIG. 17 SCHOOL
2 1/4 in. only



FIG. 18 SCHOOL
2 1/4 in. only



FIG. 19 SCHOOL
2 1/4 in. only



FIG. 20 POLICE
2 1/4 in. only

Emblematic door knobs

These special knobs are selected from a large number made up for societies, schools, banks, railroads, etc. Correspondence relating to this class of work (for which we have unequalled facilities) is invited.

Pattern charges can be saved if some of above can be used. See also pages 315 and 316.

Cuts third size

Elizabethan School

Guernsey Design

Symbol SG

Cast bronze

Standard finishes:
BY21; BX67; SY804

See descriptive list of finishes, page 40.



Nos. SG90 and SG68



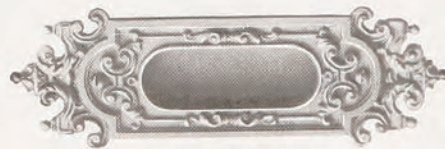
Nos. SG90 and SG35



No. SG854



No. SG1730



No. SG1349

Number	Size	Article
SG35	2 1/4 x 2 1/4 in.	Door Knob with No. 0 (high) shank.
SG67	2 5/8 x 1 5/8 "	" " " " " "
SG68	3 x 2 5/8 "	" " " " " "
SG69	3 x 1 7/8 "	" " " " " "
SG90	1 1/8 x 3 3/8 "	Plate for all locks.
SG854	" "	Cup for all sliding door locks.
SG1730	" "	Push Plate.
SG1349	2 x 6 1/8 "	Sash Lift, flush.

For escutcheon plates, with thumb-turns, add 1/2 to list number.

When ordering, give list number (in the case of escutcheon plates, also number of lock with which they are to be used), and finish.

Egyptian School

THE lotus is one of the most frequently occurring motives in Egyptian decoration, besides which the zig-zag, fret, whorl, chrysanthemum, scale, star, scarabaeus, palm, cobra, etc., are often distinguishable. Its beginnings are lost in prehistoric obscurity and its latest phases reach to about 340 B. C. Strong and superb conventionality with constant symbolism are its salient characteristics. An Egyptian scarabaeus engraved with the cartouche is one of the most self-contained and complete pieces ever designed.

It is so complete as to satisfy the eye at once, a composition to which nothing could be added to increase its true decorative effect.

Khartoum Design

Symbol RK

Cast bronze
Standard finishes:
BY21; BX67

See descriptive list of finishes, page 40.



Nos. RK90 and RK35



No. RK854



No. RK1730

Number	Size	Article
RK35	2¼ x 2¼ in.	Door Knob with No 0 (high) shank.
RK90	11 x 3 "	Plate for all locks.
RK812	2 x 1⅞ "	Key Plate.
RK854	11 x 3 "	Cup for all sliding door locks.
RK1730	" "	Push Plate.

For escutcheon plates, with thumb-turns, add ½ to list number.

When ordering, give list number (in the case of escutcheon plates, also number of lock with which they are to be used), and finish.

German Gothic School

GERMAN Gothic was much inspired by the French, the Germans keeping the same relation to French art as they did in the Renaissance period to Italian art.

A lack of delicate inspired perception often produced a hard uncompromising feeling. Some of the earlier, simpler forms are more impressive and the peasant carvings and the work of the early German metal-workers are full of true Gothic vigor and inspiration, such as we often see in the early work of France and Italy.

Cologne Design

Symbol RC

Cast bronze and iron

Standard finishes:
BY14; NX56; FX80

See descriptive list of finishes, page 40.



Nos. RC90 and RC36



No. RC854



Nos. RC85 and RC35



Nos. RC87 and RC35

Number	Size	Article
RC35	2¼ x 2¼ in.	Door Knob with No. 0 (high) shank.
RC36	2½ x 2¼ "	" " " " " "
RC37	2½ x 2½ "	" " " " " "
RC223	2¼ in. dia.	Rose with No. 0 (high) thimble.
RC231	2 x 2 in.	" " " " " "
RC85	7¼ x 2¼ "	Plate for mortise knob latches.
RC85½	" "	" " lock No. 1534 only.
RC87	8⅝ x 2⅝ "	" " locks with 2½ and 2¾ in. spacings only.
RC88	9⅝ x 2⅞ "	" " inside of locks Nos. 726 and 670 series only.
RC89	10⅝ x 3⅞ "	" " outside of locks Nos. 726 and 766, 790 and 670 series only.
RC90	11½ x 3⅞ "	Plate for outside of locks No. 750 series only.
RC91	12 x 3⅞ "	" " locks No. 654¼ series only.
RC812	2 x 1 "	Key Plate for all locks.
RC854	8⅝ x 2⅝ "	Cup for all sliding door locks.

When ordering, give list number (in the case of escutcheon plates, also number of lock with which they are to be used), and finish.